



Photo courtesy of Tom Christiano

Winter 2018

## A Word from the President

### Inside This Issue

- 1 A Word from the President
- 2 Nov & Jan Demo Reviews
- 3-5 Member News;
- 6 Happenings & Opportunities
- 7 Website Update
- 8 50<sup>th</sup> Retro Plans
- 9 Feb. - May CAS Programs
- 10 2017-2018 Programs List
- 11 July 4<sup>th</sup> Exhibit
- 12 Calls for Artist
- 13 Board of Directors
- 14 Membership Form

### IMPORTANT NOTICE!

Please pay your dues during the month of March.  
Your membership is valid through March 31<sup>st</sup>; dues are due April 1<sup>st</sup> of each year.

*New this year:  
Pay online on our website!  
See page 7 for more info.*



### Greetings Art Lovers!

I recently had the pleasure of traveling out of the country to a tropical island for a wonderful vacation. As I was sipping a tasty beverage under a swaying palm tree, I got to thinking about the blessings we enjoy living in the US of A.

While the resort had great food, beautiful beaches, and comfortable accommodations, I was struck by the harsh reality of life in the surrounding streets and neighborhoods. There was a severe lack of many basic necessities that we take for granted... reliable electricity, a sound home, educational resources for children, even just paved roads! But nevertheless the people seemed happy, friendly, and proud of their culture and country. Many houses were painted in pleasant pastel colors, the textiles and fabrics were bright and lively, and along with the ubiquitous Bob Marley portraits there were wonderful paintings of the local scenery... mountains, beaches and colorful views from their everyday lives.

I think that Artists have a Superpower to transform the seemingly dull or mundane into snippets of insight and beauty. We have the ability to create our own interpretation of our surroundings and experiences in a visual manner that can transcend languages, borders, and cultural differences!

Go to a museum and explore the sections representing different cultures and civilizations... there's always an example celebrating ordinary life, created by those who lived in that time.

It doesn't seem to matter what tools, talent, or quality of materials are available; the spirit of expression will shine through!... so, what are You waiting for!?!

*Think Spring! And Keep Creating!*

*Roberta Witts*

## November & January Demonstrations

### November Demonstration - Priti Lathia

Priti Lathia demonstrated Alcohol Ink Painting at the November meeting. Priti is a professional artist and teacher. She demonstrated a variety of techniques for creating different effects using brilliant intense colors, and a discussion of the different non-porous surfaces used for alcohol ink painting.



**Red Roses**  
Alcohol Ink on Yupo  
painting by Priti Lathia



**Priti Lathia presents the use  
of alcohol inks  
at the November  
demonstration**



**Tom Dunlay demonstrates  
oil painting techniques for  
painting a winter landscape  
at the January  
demonstration**

### January Demo - Tom Dunlay

Tom Dunlay's demo at the Chelmsford Library on Jan. 20 was attended by a large crowd of enthusiastic artists and art supporters. Tom demonstrated how he paints a winter landscape using oil paints, and gave insight into his approach. Tom is a plein air painter who doesn't rush and paints in the Boston Tradition (American Impressionism combined with a more conventional approach). His paintings have won numerous awards.

*See page 6 for how to view demos on Cable TV or internet  
(Happenings with Helen Moriarty).*

---

*Creativity takes courage.*

*- Henri Matisse*

---



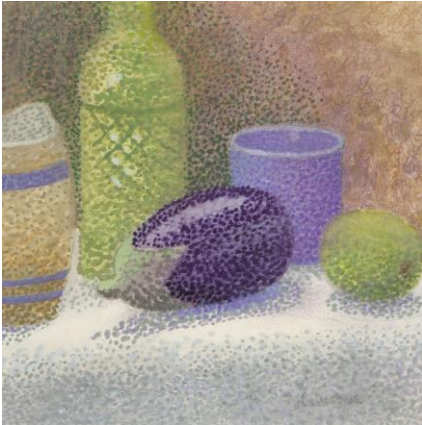
## Member News

### Stamm & Black

525 Mass Ave., West Acton

**Priscilla Levesque** is exhibiting her paintings at *Home by Stamm & Black*, a home furnishings store located in West Acton.

One of her works on display there is "Still Life with Eggplant".



**Laurie Simko's** artwork is currently in the Winter Juried Show at the Duxbury Art Complex. Her oil painting, "Of Life", won first place in the Oil/Acrylic category from the Duxbury Art Association.



**Of Life**

Oil painting by Laurie Simko

### Picture Yourself!

17 Central Square, Chelmsford

**Gerry LaGrange** currently has a selection of paintings on display at Picture Yourself! from mid-January through February.



**Gerry LaGrange** is shown here in front of his display of paintings at Picture Yourself!

**Robert Brennan** will be exhibiting his artwork at Picture Yourself! during March and April.



### New Art School!

**Claire Gagnon** has opened an Art School: *Chez Claire*. Claire states, "In a relaxed atmosphere, participants paint with a palette knife and create an impression of the subject matter." She currently has classes open for registration, which she says are filling up fast. Her instruction is funded in part by the Mass. Cultural Council. Upcoming 2-hour workshops for beginning adult painters include the following:

**Brush Art Gallery** (256 Market St., Lowell MA)

\$20.00, Supplies will be provided

Sat. March 10, 2018 (1:00 - 3:00)

To register/pay online: [www.thebrush.org/events.htm](http://www.thebrush.org/events.htm)

**ALL Arts Gallery** (302 Market St., Lowell MA)

\$20.00, Supplies will be provided

Sat. April 7, 2018 (1-3:00)

To register/pay online:

<http://www.artsleagueoflowell.com/education/>

**Dracut Library** (28 Arlington St., Dracut MA)

Free, Supplies will be provided

Sat. April 14, 2018 (10:00 - Noon)

To register: <http://www.dracutlibrary.org/>

For more information, contact Claire at [clairegagnonart@gmail.com](mailto:clairegagnonart@gmail.com)



## Member News (cont'd)

### The Summer Place

20 Summer Street, Chelmsford



**Elaine Steinhilber's** colorful watercolor and collage artwork is now on display at The Summer Place until the end of February. Elaine is a resident at The Summer Place.

The Summer Place is always free to visit and open to the public daily.

**Arlene Huard's** artwork will be displayed there during March and April.

### Chelmsford WinterFest

A Photography Exhibit, sponsored by the Chelmsford Cultural Council, was held at the Chelmsford Library. At the Awards Reception on Sun., Feb. 4, 2018, **Lee Fortier** won the Professional division with his photograph, Blue Pail & Flowers.



**Lee Fortier** with his first place photograph at the Chelmsford WinterFest Photography Exhibit

**Elaine Seidel** has a selection of her photographs on exhibit at the PCA in Westford until March 11. A Reception is scheduled for Thurs. March 8, 5-9:00.



**"Knowledge is Power"**  
photograph by Elaine Seidel in the  
*Kaleidoscope:*  
*Perspective through a Lens*  
Exhibit at the PCA



## Member News

### CAS Members Winter Exhibit at the Chelmsford Library

On Sat., Jan 13, a well-attended Reception was held at the Chelmsford Library for artists participating in the annual Members Winter Exhibit.



Some of the exhibiting CAS members with their artwork at the Members Winter Exhibit at the Chelmsford Library. Left to Rt, Top to Bottom: **Donna Hediger, Elaine Seidel, Ortha Splingaerd, Ku-chuan Hsiao, Roberta Wiffts, Esther Donlon, Tom Christiano, Gerry LaGrange, and Janet Clingerman-Hsiao**, (most photos courtesy Tom Christiano!)

## “Happenings” – Demos on Cable TV

**“Happenings with Helen Moriarty”** To watch art demonstrations that are presented at our meetings and other programs, tune in to the Cable channels at the times listed below. You may also watch on your computer at any time. Just follow the starred directions below. Hope you enjoy the shows!

*Helen Moriarty, Chelmsford TV Producer*

February, 2018 - “Marilene Sawaf Works with Casein”

March, 2018 - “Marilene Sawaf Talks About Art”

Chelmsford Cable TV - Channel 8, Verizon - Channel 38

Monday 9:30 AM; Thursday 7:30 PM; Saturday 8:30 PM

Lowell Cable TV - Channel 8

Monday 10:00 AM

Billerica Cable TV - Channel 8

Monday 4:30 AM; 4:00 PM; Friday 1:00 PM

\* To View Online: Some of the most recent "Happenings" may also be viewed on the website [www.chelmsfordtv.org](http://www.chelmsfordtv.org) On the Home page, click on Watch - On Demand - Search - type in "Happenings" and Artist's Name – Hit Enter. You should get the Streaming show.

## Opportunities

**Volunteers are needed - You are needed!** Please consider volunteering. There are many tasks involved in keeping the CAS an active and engaged community.

Some Volunteer Opportunities include:

At our Meetings – setup, greeter, raffle ticket sales (and procurement of raffle items), demonstrator's assistant, food service

At our Exhibits – setup, intake/registration, labelling, hanging, judge assistance, sales and more!

Other – Field Trip Coordinator, Volunteers Coordinator, Webmaster

Many opportunities exist! Contact Roberta Witts or Sue Trepaney.

### **Current Need: Hospitality Assistant**

A “job-share” opportunity to help Ivana at meetings and to substitute when Ivana is not available. Contact Roberta or Ivana.

### **Current Need: Webmaster**

The CAS is looking for a dedicated webmaster to keep our web site updated <http://www.chelmsfordartsociety.com> If interested, or if you know of someone who might be, contact Roberta Witts.

### **Scholarship Information**

The Chelmsford Art Society offers a scholarship annually to local teens continuing their Art studies in college.

Applications will be available in March; and interviews with students will be scheduled in April.

## CAS News

### Chelmsford Center for the Arts

Open Studios are every "Second Saturday" from 1:00-4:00 pm. Stop in and visit the workspaces of resident artists Donna Berger, Trina Teele, and Rita Thompson.

### Check the CCA web site for news and events:

<http://www.chelmsfordarts.org>

### Western Avenue Studios

122 Western Avenue, Lowell  
Visit artists in their workspaces during Open Studios - "First Saturday" of every month.

### Loading Dock Gallery

The Loading Dock Gallery is open Wednesday through Saturday, 12 noon to 5:30 pm, Thursday evenings until 8:30 pm and Sunday 12 noon to 4 pm. For more information, call 978-656-1687 or visit

[www.theloadingdockgallery.com](http://www.theloadingdockgallery.com)

### CAS Web Site

Some exciting news regarding the CAS website!

The web site will be migrating to WordPress in the near future. This will make it easier to update and maintain. *We are still seeking someone who would enjoy doing the updating and maintenance. Please contact Gerry LaGrange or Roberta Witts.*

The CAS web site now gives you the ability to pay online for:

- Membership - Renewal or New
- Exhibits
- Donations

### Membership Renewals Are Due!

Please pay before April 1<sup>st</sup>.

- Online payment preferred; or
- Mail a check to CAS Membership, PO Box 401, Chelmsford MA 01824; or
- Pay in person at any meeting or at Picture Yourself!

*(Please download a form if not paying online and submit it with your payment. A copy is provided at the end of this newsletter.)*

Remember to update your contact information when you fill out the form. Note that if you have not renewed your membership by April 1<sup>st</sup>, your email address will be removed from the CAS mailing list.

### New! Membership Cards

Each renewing or new member will be presented a membership card that will include the membership expiration date (March 31<sup>st</sup> and the year of expiration). Show your card to get a discount at Roberta Witt's Picture Yourself! frame shop in Chelmsford.

## Celebration - 50th Anniversary of The 4<sup>th</sup> of July Art Exhibit! June - August

**50th Retrospective:** This year is the 50th anniversary of the 4th of July Art Exhibit. The CAS will be having a special exhibition to celebrate. It will be held in the Gallery at the Chelmsford Center for the Arts, from June through August.

Any artist who has won a blue ribbon or Best in Show (preferably from the 1970's, 80's or 90's) and still has their winning artwork, is requested to lend it (and the ribbon if possible) to be exhibited in the 50th Retrospective Display. Contact Roberta.

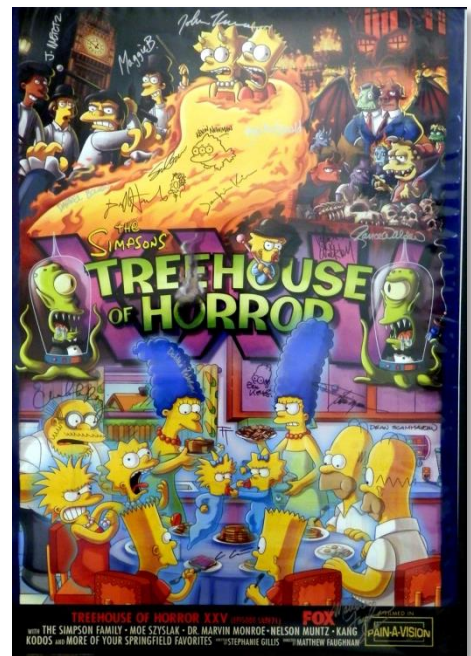
We are also looking for ANY memorabilia, photos, stories, news articles, etc. to include in the exhibit.

Volunteers will be needed! The exhibit at the CCA Gallery needs to be manned during the hours it is open. Two volunteers from the CAS are needed for these time periods: each Sat and Sun, 1:00-4:00 and Thursday afternoons during the Farmers Market (1:00-6:00). Please plan to commit to one of the timeslots. A representative from the CCA will be the third volunteer. It is important to commit to a time period, we are depending on you! In addition, if you know of any art students or anyone studying Museum Studies, this would be a good internship opportunity to gain some experience.

### Simpsons Poster Fundraiser

Lance Wilder, who is formerly from Chelmsford and now works in Hollywood for "The Simpsons" TV show, has generously donated a multiple-signatures signed Simpsons Poster to the CAS to assist in our fundraising efforts for the 50th Retrospective – **Thank You Lance!**

Tickets will be available for purchase at demos and meetings, or may be purchased at Picture Yourself! The poster will reside at Picture Yourself! for viewing. Tickets are \$5.00 each, or 5 tickets for \$20.00. Drawing will be held on July 4<sup>th</sup>.



**"The Simpsons" Signed Poster  
Treehouse of Horror XXV  
Episode 556**

Tickets are now available for  
the raffle on July 4<sup>th</sup>



## February & March CAS Programs

*Please note that the following programs will be held at the Chelmsford Center for the Arts, 1A North Rd, Chelmsford, MA.*

*See page 10 for a complete listing of CAS programs.*



**Self-Portrait**  
Oil Painting by  
Leo Mancini-Hresko

### February Demo - Leo Mancini-Hresko

Leo Mancini-Hresko will demonstrate painting a portrait at the next meeting of the CAS, which will be held at the Chelmsford Center for the Arts at 7:00 on Wed. Feb. 28. Leo was born in Boston and taught art for many years in Italy. He currently maintains a studio at Waltham Studios in Waltham, MA, where he holds workshops and hosts other artist's workshops. He typically paints en plein air. In addition to portraits, he enjoys painting still lifes, figures, cityscapes and old ruins. His artwork is on exhibit internationally.

### March Demo - William Cheever Turner

William Cheever Turner will present *A Talk About Art* at the Chelmsford Art Society meeting on Wed. March 28 at 7:00 at the CCA. The artist is a fine art realistic painter. He ascribes human attributes to things that are not human, such as in his series of time-worn trucks, cars and farm equipment.

He received his art education at several art schools including a BFA from the New Hampshire Institute of Art, Manchester, NH, classes on Color Theory at the MFA in Boston, and Master of Visual Arts-Painting, NH Institute of Art, Manchester, NH. He is a member of the Oil Painters of America, Copley Society of Art, Boston, MA and Whistler House Museum, Lowell, MA. He has exhibited at Grace Chapel, Lexington, MA, Copley Society of Art, Boston, MA, Whistler House Museum, Lowell, MA, and Wren Gallery, Bethlehem, NH. William is a resident of Milford, NH.

See his website for more information about the artist and to view his fascinating artwork: <https://turnwoodfineart.com/>



**Future Generation**  
Oil Painting by  
William Cheever Turner

**April Demo/ Meeting** will be held on Wed. April 25, 7:00 at the CCA. Demonstrator TBD.

**May Meeting** - join us for a mini painting workshop and pizza party on Wed. May 30 (5:00-8:00) – bring your own supplies! The artist who donates the most paintings to the CAS to be sold at the July 4<sup>th</sup> Exhibit will receive \$25.00.

## Chelmsford Art Society Programs 2017 - 2018

<b>Date &amp; Time</b>	<b>Demonstration / Event</b>	<b>Location</b>
Sept. 27, 2017 Wed. 7 PM	<b>Marilene Sawaf</b> <b>Working with Casein</b>	Chelmsford Center for the Arts, 1A North Rd.
Oct. 25, 2017 Wed. 7 PM	<b>Peter Kostoulakos</b> <b>Restoring Paintings</b>	Chelmsford Center for the Arts, 1A North Rd.
Nov. 29, 2017 Wed. 7 PM	<b>Priti Lathia</b> <b>Alcohol Ink Painting</b>	Chelmsford Center for the Arts, 1A North Rd.
Dec. 4, 2017 Mon. 5 - 7 PM <i>Snow Date: Dec.6, Wed. 5 - 7 PM</i>	<b>Holiday</b> <b>Member Show</b> <i>Receiving</i>	*Chelmsford Library, 25 Boston Rd
Jan. 13, 2018 Sat. 2 - 4 PM	<b>Holiday</b> <b>Member Show</b> <i>Reception</i>	*Chelmsford Library, 25 Boston Rd
Jan. 18-20, 2018 Thurs. - Sat.	<b>Holiday</b> <b>Member Show</b> <i>Pick up &amp; Sign out Artwork at Library Desk</i>	*Chelmsford Library, 25 Boston Rd
Jan. 20, 2018 **Sat. 2 PM	<b>Tom Dunlay</b> <b>Oil Painting</b>	*Chelmsford Library, 25 Boston Road Chelmsford, MA
Feb. 28, 2018 Wed. 7 PM	<b>Leo Mancini-Hresko</b> <b>Portrait Painting</b>	Chelmsford Center for the Arts, 1A North Rd.
March 28, 2018 Wed. 7 PM	<b>William Cheever</b> <b>Turner</b> <b>Talk on Art</b>	Chelmsford Center for the Arts, 1A North Rd.
April 25, 2018 Wed. 7 PM	<b>To be announced</b>	Chelmsford Center for the Arts, 1A North Rd.
May 30, 2018 Wed. 7 PM	<b>Mini Painting</b> <b>Workshop</b>	Chelmsford Center for the Arts, 1A North Rd.

Meetings are held at the Chelmsford Center for the Arts, 1A North Rd., Chelmsford, MA (unless otherwise noted\*) Most programs are at 7:00 PM (unless otherwise noted\*\*) and are free and open to the public.



**Roberta Wiffs and Ivana Valentich**  
at the Winter Members Exhibit  
Reception on January 13

## 2018 July 4th Exhibit

The Chelmsford Art Society has started planning for our annual exhibit. This is our big event of the year and we need your help! Please start thinking about how you would like to help (see task list below).

The Reception on Mon. July 2 will be special, as this is the 50th anniversary of the 4th of July Art Exhibit.

On-line registration is *strongly preferred*, and will be available during the month of June.

If you would like to donate something for the raffle gift baskets, please bring it to the next meeting, or to Roberta's frame shop.

## July 4th Exhibit - Volunteers are needed!

This is our most important event of the year and it takes a lot of volunteers to make it a success! Please review the list below and pick out a task and time slot that works best for you.

Date	Task	Hours	Volunteers Needed
Fri June 29	Set Up Panels	9:00 – 12:00	6
Sat June 30	Adult Receiving	1:00 – 3:00	6-10
	Adult Receiving	5:00 – 7:30	6-10
	Student Receiving	1:00 – 3:00	2-4
	Student Receiving	5:00 – 7:30	2-4
Sun July 1	Rehanging	4:30 – 7:30	4-8
Mon July 2	Student Reception	4:00 – 5:00	2-4
	Adult Reception	5:00 – 7:00	4-8
Tues July 3	Festival Opens Mini-Art Sales, Raffles	4:00 – 9:00	6-10
Wed July 4	Festival Mini-Art Sales, Raffles	8:30 – 1:00	4-6
	Pick Up Artwork	1:00	3
	Breakdown	1:00	6-10
Thurs July 5	Late Pick Up	4:00 – 6:00	2-3
	Receiving at Library Labelling, Hanging	4:00 – 8:00	4-8

---

*Creativity is contagious.  
Pass it on.*

*- Albert Einstein*

---

*Volunteers are also needed for creating and publishing the Festival Program after judging; and creating a numerical listing for Most Popular voting.*



## Calls for Artists

### Westford Regional Art Event

Parish Center for the Arts, 10 Lincoln St., Westford

March 16 – 25

Online registration Feb. 20 – March 10

Deliver artwork March 11 & 12.

For more info: [http://westford.org/pca/?page\\_id=302](http://westford.org/pca/?page_id=302)

### Parish Center for the Arts Gallery

10 Lincoln St., Westford

Call for Art for 2018-2019 Season

The PCA Gallery invites artists to submit work for consideration in month-long solo and group exhibitions. Submit 8-10 images on CD or via email (.jpg files). Include the title, dimensions and media for each image, plus a brief artist biography and contact information. The artist will be responsible for setting up the exhibit, and for gallery sitting. Deadline for submission is Friday, March 30, 2018. Email: [pca@westford.org](mailto:pca@westford.org) Visit their web site for more information: [www.westford.org/pca](http://www.westford.org/pca)

### Picture Yourself!

17 Central Square, Chelmsford

If you would like to have your artwork featured at the Picture Yourself! frame shop in Chelmsford, contact Roberta Witts.

### Chelmsford Library

25 Central Square, Chelmsford

Meeting Room, and a display case, are available.

If you, either alone or with a couple of your fellow artists, would like to exhibit at the Chelmsford Library, Contact Jeff Hartman. 978-256-5521 x109; [jhartman@chelmsfordlibrary.org](mailto:jhartman@chelmsfordlibrary.org)

### The Summer Place

20 Summer Street, Chelmsford

Contact Roberta Witts if you would like to have an exhibit of your artwork at The Summer Place.

---

*As simple as it sounds, we all must try to be the best person we can: by making the best choices, by making the most of the talents we've been given.*

*- Mary Lou Retton*

---

## Next Newsletter: May 15, 2018

**Please share your Art news** with our members! Also, let us know if you know of any Calls for Artists, upcoming art events/ exhibits or artist opportunities in our area. The next newsletter will be published on May 15, 2018; deadline is May 9, 2018. Email news items and .jpgs to [nan@nanquintin.com](mailto:nan@nanquintin.com)

## Membership Information

Membership is open to anyone who lives in Chelmsford or its surrounding communities who is interested in the arts, produces artwork or is a supporter of the arts.

Members will receive the Members Directory, quarterly newsletters and notices of special events.

Fees are payable on a yearly basis and are due April 1<sup>st</sup> of each year. Membership is valid through March 31<sup>st</sup> regardless of the date dues were received.

Special CAS members-only discounts at Picture Yourself! Frame Shop and Gallery.

Membership fees are as follows:

Single \$25

Family \$40

Senior Citizen \$20 (60 and over)

Student \$20 (up to grade 12)

New or renewing memberships may be paid online:  
<http://www.chelmsfordartsociety.com/>

A Membership Form may be downloaded here (if not paying online):  
[http://www.chelmsfordartsociety.org/Application\\_for\\_membership\\_form.pdf](http://www.chelmsfordartsociety.org/Application_for_membership_form.pdf)

Download CAS brochure to learn more about membership:

<http://www.chelmsfordartsociety.org/MembershipBrochure.pdf>

---

*Every time you renew your membership, check that all your information is updated!*

---

## CAS Board of Directors

<b>President:</b>	Roberta Witts <a href="mailto:bobbi.witts@gmail.com">bobbi.witts@gmail.com</a> 978-256-0140
<b>Vice President:</b>	Vacant
<b>Treasurer:</b>	Gerald LaGrange <a href="mailto:gnlagrange@gmail.com">gnlagrange@gmail.com</a> 978-256-0835
<b>Secretary:</b>	Sue Trepaney <a href="mailto:strepaney@gmail.com">strepaney@gmail.com</a> 978-667-4374
<b>Exhibits:</b>	Roberta Witts <a href="mailto:bobbi.witts@gmail.com">bobbi.witts@gmail.com</a> 978-256-0140
<b>Hospitality:</b>	Ivana Valentich <a href="mailto:ivalentich@gmail.com">ivalentich@gmail.com</a> 603-595-2169
<b>Programs/Publicity:</b>	Helen Moriarty <a href="mailto:hsmori146@aol.com">hsmori146@aol.com</a> 978-251-3971
<b>Webmaster:</b>	Vacant
<b>Technical Advisor:</b>	Gary Frascarelli <a href="mailto:gary@garyfrascarelli.com">gary@garyfrascarelli.com</a> 978-453-1100
<b>Assets:</b>	Sandra Galloway <a href="mailto:mschief93@aol.com">mschief93@aol.com</a> 978-251-7254
<b>Membership:</b>	Gerald LaGrange <a href="mailto:gnlagrange@gmail.com">gnlagrange@gmail.com</a> 978-256-0835
<b>Newsletter:</b>	Nan Quintin <a href="mailto:nan@nanquintin.com">nan@nanquintin.com</a> 978-433-9731

## About the Chelmsford Art Society

All residents of Chelmsford, Massachusetts and its surrounding communities who have an interest in the arts and crafts are invited to become members of the Chelmsford Art Society.

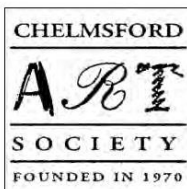
The CAS meetings are held on the last Wednesday of the month (unless otherwise noted) at the Chelmsford Center for the Arts or at the Chelmsford Library, September through May.

The CAS sponsors the 4th of July Art Show at the CCA which has become an annual tradition and is a highlight of the Town of Chelmsford's 4th of July Celebrations.

The Chelmsford Art Society has many volunteer opportunities and depends entirely on the continued enthusiasm and involvement of its members.



**Tom Christiano** and **Nan Quintin** were honored to judge the WinterFest Photography Exhibit which was sponsored by the Chelmsford Cultural Council.



Application for membership to the

## Chelmsford Art Society

*Please print clearly*

Date \_\_\_\_\_

### New Membership

Name \_\_\_\_\_

Address \_\_\_\_\_

City \_\_\_\_\_ State \_\_\_\_\_ Zip \_\_\_\_\_

Phone \_\_\_\_\_

E-Mail \_\_\_\_\_

Website \_\_\_\_\_

Preferred media/style of interest:

☐ Please add my email and URL to the CAS website

☐ Please save paper and email me my newsletter!

### Renewal of Membership

Name \_\_\_\_\_

*Please update any personal information using the New Membership section.*

### Fees:

Make checks payable to Chelmsford Art Society

☐ Single \$25 ☐ Family \$40

☐ Senior (60+) \$20 ☐ Student \$20

☐ Donation to the scholarship fund. \$ \_\_\_\_\_

**Fees are due every April 1.**

**Bring application and fee to our monthly CAS meeting**

(check dates for meetings on website or newsletter)

**Or mail to:**

**Chelmsford Art Society**

PO Box 401

Chelmsford, MA 01824

For more information, visit our website at  
<http://www.chelmsfordartsociety.org/>



**Chelmsford Art Society**

PO Box 401

Chelmsford, MA 01824

[www.chelmsfordartsociety.com](http://www.chelmsfordartsociety.com)

