

*Chelmsford Art Society*  
*Newsletter*  
*September, 2014 Fall Issue*

[www.chelmsfordartsociety.org](http://www.chelmsfordartsociety.org)  
[chelmsfordartsociety@gmail.com](mailto:chelmsfordartsociety@gmail.com)

**Chelmsford Art Society**  
**Programs 2014 - 2015**

-Sept. 24, 2014, Wed. 7PM	Dianne Levine - Pastels
-Oct. 29, 2014, Wed. 7PM	Janice Jones - Fabric Art
-Nov. 19, 2014, Wed. 7PM	Ilene Richard: Whimsical Acrylics
-*Dec.1, 2014, Mon. (Dec. 2 Snow Date)	Holiday Member Show, Receiving 5:30 - 7 PM Chelmsford Adams Library
-*Jan. 17, 2015, Sat.	CAS Holiday Show Artists Reception 2 - 4 PM
-*Jan. 22,23,24, 2015	Pick up/Sign out at Lib Desk
-*Jan. 24, 2015 Sat. 2PM	Mary Woodward : "Monuments Men"& " Saving Italy" Chelmsford Library
-Feb. 21, 2015 Sat. 2 PM	Steve Previte - Oil Painting
-March 25, 2015, Wed. 7PM	Andrew Kusmin - Watercolor
-April 29, 2015, Wed. 7PM	TBD
-May 27, 2015, Wed.7PM	Mini Painting Workshop

**These programs are at 7:00 PM and Free of Charge.**

**\*Unless otherwise noted, meetings are held at the  
 Chelmsford Center for the Arts, 1A North Rd.,  
 Chelmsford, MA 01824**

**A FEW WORDS FROM THE  
 PRESIDENT**

Greetings to CAS members! I hope that you all had a spectacular summer and have lots of images, (either photos or beautiful memories), to inspire you as we enter the fall art season. As you will see from our 2014-2015 programs, we have a great line up of presenters and programs. I hope to see you all at our September meeting for a great demo by Dianne Levine, refreshments, and our fun monthly raffle.

Artfully yours,  
*Denise Rainis*



Congratulations to Sandy Galloway for her Art Show at Summer Place. She exhibited the paintings that she created after a trip to Italy.



**SEPTEMBER 24, 2014 7:00 PM: DIANNE LEVINE**  
**The Chelmsford Art Society** will feature **Dianne Levine** demonstrating **Pastel Painting** at the Chelmsford Center for the Arts.

Levine has been a teacher and an artist for many years. A graduate of Moore College of Art in Philadelphia, she began her career in advertising in New York City, but always felt that her future was in fine art. Leaving advertising to pursue her dream, she never looked back. Presently, she is teaching pastel painting at **Arlington Center for the Arts** and pastels and oil painting at the **Lexington Arts and Crafts Society**.

Dianne's colorful work mixes **Impressionism with Expressionism** and features landscapes, portraits and still life. Her work features New England scenes, but many of her creations feature other parts of the world. Levine is an **internationally known artist** who has resided in many states in the US and Japan. The artist's work has been seen in the Tokyo Metropolitan Museum and in corporate collections.

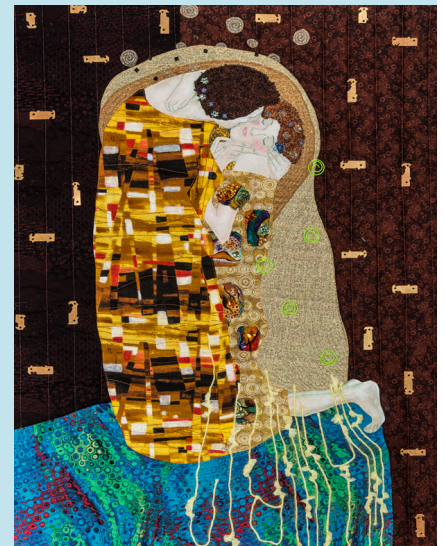
The Chelmsford Art Society will meet for the demonstration on Wednesday, September 24, 2014, at 7:00 PM at Chelmsford Center for the Arts, 1A North Rd., Rt. 4, Chelmsford, MA. The meeting is free and open to the public.

**OCTOBER 29, 2014 7:00 PM: JANICE JONES**

**The Chelmsford Art Society** will feature **Janice Jones**, who will present a **talk/demonstration on Fabric Art** at our monthly meeting.

Janice has always been motivated to work with her hands. Working with textiles allows her to push boundaries and create a story. Ideas come to her during quiet times. The artist uses color to create drama, interest and dimension. She applies fibers and embellishments or hand painted elements for extra emphasis.

Jones' work has been published in the Quilter Magazine, and has won several awards in textile shows. Her fabric creations have been exhibited in many national and local art venues, as at The Whistler House, Brush and Quilt Museums in Lowell, MA and The Chelmsford Art Society's 4th of July Art Festival. Some quilt groups of which Janice is a member include the Whistler House, Andover Artist Guild, Hannah Dustin Quilt Guild and the Merrimack Valley Quilters Guild.



The Chelmsford Art Society will meet for the demonstration at the Chelmsford Center for the Arts, 1A North Rd, Chelmsford, MA, Wed. October 29, 2014, 7:00 PM. The meeting is free and open to the public.



### **Helen Moriarty: September and October Featured Artist at Summer Place**

As a new member of the Chelmsford Art Association, I only saw Helen Moriarty behind a camera as she was constantly filming our guest speakers. Much to my surprise and pleasure, Helen is featured at Summer Place during the months of September and October, where she will exhibit some of her work. In correspondence with Helen, she writes that her style with acrylic paint is realistic with an impressionist leaning. Some of her subject matter depicts the sights she has seen during her travels while others depict scenes closer to home.

Helen also wrote she has an interest in Scratchboard that began when art teachers were required to teach this medium to students in middle school. Helen found this interesting and has experimented with adding color to the scratchboard. She feels that when working on black-faced boards, that she is revealing a scene or an animal beneath the surface.

In addition to being a member of the Chelmsford Art Society, which she mentioned, keeps her focused on her art, she currently produces the show 'Happenings' on Chelmsford TeleMedia, Channel 8 that is 'all about art in Chelmsford and beyond'. An artist's reception for Helen will be held in September at a date to be announced. Summer Place is located at 20 Summer Place, Chelmsford, MA. When you enter the building, turn left and the wall on the right-hand side of the building is where our members display their art at Summer Place, a retirement community located within the heart of Chelmsford. Pictured is Helen Moriarty with one of her Scratchboard creations.

### **Coming in November and December at Summer Place:**

**Carolyn RICKER Harlow** will be showing her work in pastel and acrylics.

### **Programs of Art Demonstrations on Cable**

**Chelmsford Cable TV –**  
Channel 8, Verizon - Channel 38  
Thursday 7 PM Saturday 8 PM

**Billerica Cable TV**  
Channel 8  
Monday 4 PM  
Friday 1 PM

**Lowell Cable TV - Channel 8**  
Monday 10 AM  
Tuesday 6 PM

\* People who live in **Westford and Tyngsboro** that have **Verizon** may be able to catch Chelmsford Cable programs on **Channel 38**.\*\* Some of the most recent "Happenings" may also be viewed on the website

**[www.chelmsfordtv.org](http://www.chelmsfordtv.org)**. Click on **Public Access Shows** and scroll to **Happenings**.



## OTHER AREA NEWS AND ART EVENTS

### Chelmsford

**-Chelmsford Center for the Arts:** 1A North Road, Chelmsford, MA 01824

<http://www.chelmsfordarts.org/> The Big Three: CCA Resident Artists Paint Large

**-Picture Yourself!** 17 Central Square, Chelmsford, MA 01824:

<http://www.pictureyourselfgallery.com/> Framing and Gallery of local artists and limited edition prints.

**-Chelmsford Public Library:** 25 Boston Road, Chelmsford, MA 01824

<http://www.chelmsfordlibrary.org> Photographs of Rebecca Killeen-Brown.

October: Photographic compositions by Louis Henri Pingitore. Reception Oct 4, 2-4 pm

### Lowell

**-American Textile History Museum.** 491 Dutton Street, Lowell, MA 01854. [www.athm.org](http://www.athm.org) Fiber Art International. Through October 26, 2014

**-Brush Art Gallery and Studios.** 256 Market Street, Lowell MA 01852. <http://www.thebrush.org/> From the Ground Up: An Exhibition Celebrating the Joy of the Garden. Through September 13, 2014. Sept 20-October 18: Grand Smoke: The Art of Tom Gill. Reception: Sat, Sept 27, 2-4 pm

**-119 Gallery:** 119 Chelmsford Street, Lowell MA 01851. <http://www.119gallery.org/> September. Nothing Saves You More: Paintings and Prints by Justin Campaniello and Olivia Stanislas

**-Arts League of Lowell.** 307 Market Street, Lowell, MA 01852.

<http://www.artsleagueoflowell.com/allartsgallery.cfm> Elements III through September 28

**-Whistler House Museum of Art.** 243 Worthen Street, Lowell, MA 01852

<http://www.whistlerhouse.org/> Art Quilts 2014: How does your garden Grow? Through September 20.

**-New England Quilt Museum** 18 Shattuck Street, Lowell, MA 01852

<http://www.nequiltmuseum.org/> Down by the Old Mill Stream: Rhode Island Quilts and Historic Fashions. Through October 5, 2014

**-Western Avenue Studios.** 122 Western Avenue, Lowell, MA 01851

<http://www.westernavenuestudios.com/> Open Studios, September 6, noon-5 pm

The Loading Dock Gallery @ Western Avenue Studios: Texture and Terrain. Sept 3-28

**YOU CAN FIND AN EXPANDED LISTING OF OTHER ART EXHIBITS AND EVENTS LOCALLY AND AROUND NEW ENGLAND ON THE CAS WEBSITE**

If you know of upcoming shows or have favorite venues you'd like to have listed, please contact me!~ **Dana S. Whitney** 4dana@airmail.net

## CAS BOARD MEMBERS

President:	Denise Rainis <a href="mailto:rainisd@verizon.net">rainisd@verizon.net</a> 978-302-3695
Vice President:	Judy Heron <a href="mailto:jandjheron@aol.com">jandjheron@aol.com</a> 978-256-9425
Treasurer:	Gopika Narula <a href="mailto:gopika.narula@gmail.com">gopika.narula@gmail.com</a> 978-809-9465
Secretary:	Paula Mingolelli <a href="mailto:thecreativehands@comcast.net">thecreativehands@comcast.net</a> 978-808-0101
Exhibits:	Roberta Witts <a href="mailto:bobbi.witts@gmail.com">bobbi.witts@gmail.com</a> 978-256-0140
Hospitality:	Ivana Valentich <a href="mailto:ivalentich@comcast.net">ivalentich@comcast.net</a> 603-595-2169
Programs/Publicity:	Helen Moriarty <a href="mailto:hsiori146@aol.com">hsiori146@aol.com</a> 978-251-3971
Webmaster:	Trina Teele <a href="mailto:webmaster@chelmsfordartsociety.org">webmaster@chelmsfordartsociety.org</a> 978-244-0410
Assets:	Sandra Galloway <a href="mailto:mschief93@aol.com">mschief93@aol.com</a> 978-251-7254
Membership:	Peggy Jungbluth <a href="mailto:jungblu@aol.com">jungblu@aol.com</a> 978-649-7415
Newsletter:	VACANT !! ☹