



*Some artwork displayed at the Summer Art Exhibit*

Summer 2019

### Inside This Issue

- 1 Welcome New Co-Presidents
- 2-3 Volunteers Appreciation & CAS News
- 4-7 Member News
- 8-9 Opportunities
- 10 Happenings, & Volunteer Opportunities
- 11 Calls for Artists
- 12 Sept. & Oct. Demos
- 13 2018 - 2019 CAS Programs
- 14 Board of Directors
- 15 Membership Info

## Welcome New Co-Presidents!

***Congratulations to Barbara Ludinsky and Elaine Seidel who have stepped up to the plate and are enthusiastic about joining forces and leading the Chelmsford Art Society as Co-Presidents! Thank you!***



*In addition to Barbara's new responsibilities as Co-President, she has agreed to continue her duties as CAS Treasurer.*

*Please thank her when you see her!*

**Greetings!** It's the start of a new year for the CAS, and my first year as Co-President. It goes without saying that I cannot do this alone. I will need your help and that of the Board to support the Arts in Chelmsford. We will continue to pursue and address the needs of artists in our community. Please step-up and volunteer some of your time to help with the needs of the CAS. We hope to make this year a grand celebration of the 50<sup>th</sup> year of the CAS.

- *Barbara Ludinsky*



*In addition to Elaine's new responsibilities as Co-President, she has agreed to continue her duties as CAS Membership Chairman.*

*Please thank her when you see her!*

**Greetings!** Hello fellow Artists! Having grown up in Chelmsford, it's fun to come full circle taking on Co-President of the Art Society. I love how welcoming this group is to creative people! We have a great year ahead with impressive artist demos and over 20 new members! I look forward to finding out more about everyone!

- *Elaine Seidel*

## CAS News - Looking Forward...

This issue notes some changes in our organization.

**Roberta Witfs** has officially retired as President, although she will continue to share her energy and enthusiasm by having input at the Board meetings and will continue to manage exhibit opportunities.

Two Board members have stepped up to assume Roberta's official duties, **Barbara Ludinsky** (who is also CAS Treasurer), and **Elaine Seidel** (who is also CAS Membership Chairman).

Please welcome **Julie Montague** who has joined us as Special Projects Coordinator.

**Sue Trepaney** will continue as Secretary.

**Helen Moriarty** will continue as Program Director.  
See page 13 for the 2019-2020 Schedule of Programs.

## Monthly Meetings

Starting in September, our monthly meetings will be free to members, with a \$5.00 charge to non-members. All meetings are open to the public, as before.

## Thank You Volunteers!

It takes a lot of volunteer effort to produce an art exhibit of the size and magnitude of the Chelmsford Art Society's 4<sup>th</sup> of July Art Festival. Our organization is fortunate to be able to rely on many energetic and enthusiastic volunteers!

## 4th of July Art Festival

We have once again put on a successful and well attended art festival. The 4<sup>th</sup> of July Art Festival would not continue year after year without the efforts of many volunteers, donors, artists and all the art lovers who come to enjoy the exhibit. Everyone's support and participation is, as always, very much appreciated!

## 4th of July Art Festival

### Artwork at the Chelmsford Library

About 60 paintings from the Festival were displayed in the Summer Exhibit at the Chelmsford Library during July. This is an additional event that depends on CAS volunteers - it requires a lot of effort to take in, label and hang 60 paintings in two hours! A Closing Party was held on the final day of the exhibit, complete with refreshments and live music.



"Monahan's Barn"  
by **Sarah Andrews**

This painting won  
Best in Show at the  
4<sup>th</sup> of July Art Festival



**Helen Moriarty, Nan Quintin  
& Donna Hediger**  
at the Closing of the  
Summer Art Exhibit  
at the Library

## CAS News (cont'd)



This year, the CAS Board of Directors honored **Barbara Ludinsky** (left) with the Founders' Award. This award is presented annually to one or more members in recognition of their contributions to the well-being of the Society. It was presented to Barbara in recognition of her outstanding efforts in ironing out numerous treasury issues and the donation of much time and effort, particularly in creating the large number of baskets that were raffled during the festival!

**Paula Mingoelli** (right) was presented an engraved platter acknowledging her Hospitality contributions. Paula has been responsible for the wonderful, much appreciated refreshments at the Festival for many years.

A special Thank You was given to **Roberta Witts** (center) for once again orchestrating a successful 4<sup>th</sup> of July Art Festival, as well as for her many years of contributing her time and effort to benefit the CAS.

### CAS Annual Scholarship

The CAS did not award a scholarship this year because no one applied for it. The money will be held over for use next year. The Board is brainstorming ways to expand our efforts to support the next generation of artists.

### May Meeting

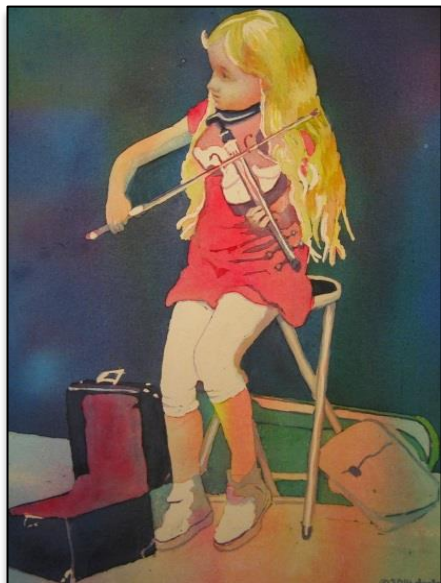
Many members attended the pizza party and stayed to create mini paintings to sell at the 4<sup>th</sup> of July Art Festival to benefit the CAS. **Julie Montague** was awarded \$25.00 for donating the most paintings.

## Member News



"3-Way Valves, USS Albacore" by **Nan Quintin**, won first place at the CAS 4<sup>th</sup> of July Art Festival in the Professional Watercolor division.

This painting is currently in the Annual National Watercolor Exhibit at the Rhode Island Watercolor Society in Pawtucket RI, where it was awarded Honorable Mention. In addition, it has been accepted into the NEWS 43rd International Watercolor Exhibit, to be held in October in Kent, Connecticut.



**Esther Donlon's** watercolor painting, "The Little Street Performer" is currently in the Annual National Watercolor Exhibit at the Rhode Island Watercolor Society in Pawtucket RI, juried by Lian Quan Zhen. The exhibit will be held Aug. 17 to Sept. 20.

An Opening Reception will be held on Aug. 17, 2-4:00.



"Good Harbor"  
oil painting  
by **Diane Harvey**

**Diane Harvey** is the Featured Artist for September and October at Picture Yourself! Frame Shop & Art Gallery (17 Central Square, Chelmsford).



## Guest Author – Writing About Art

### Why challenge yourself? by Trina Teele

For the past three July's, I have given myself a challenge of painting daily – preferably en plein air. I do this in part because July is when we take our family vacation and I want to be sure I claim time to do what I love (paint) while on my vacation. It is a challenge, for sure, but each day I conscientiously look for something to paint and it makes everything appear more alive.

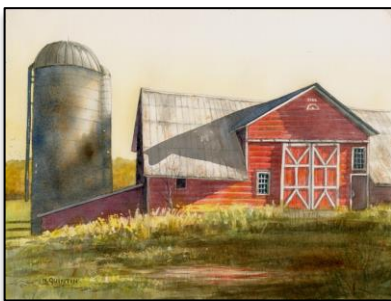
Below are some insights from my experience:

- **Decision-making practice.** Deciding what to paint is daunting. And for me, it is often the hardest part of my process. Forcing myself to fit painting into my day means I must decide quickly and not get too attached to any idea being perfect so I can begin. The painting part is a delight, but until I've settled on an idea, it can be a huge struggle.
- **Out of the studio.** Setting up to paint en plein air can be intimidating. I can't say I've mastered it at all, but doing it daily helps me to know what I'll need most of the time.
- **Quantity.** I rest all my paintings on the mantelpiece to dry. Over the course of the month it is really a lot of fun to watch the display evolve. Julia Cameron, author of *"The Artists' Way"* said, "focus on the quantity and the quality will come." I can almost witness that happening as I review the month's bounty.
- **Creativity follows commitment.** I have heard this before, and I have experienced it as well. As artists, it is sometimes difficult to take the time and commitment needed to practice. But doing so brings many rewards. Just the idea of painting being "non-negotiable" forces me to really consider, what do I feel inspired to paint? This year, I suddenly realized that I love to paint "what I love". Pretty simple realization, but it felt revolutionary at the time.
- **What is Art?** I love this question and think about it often while painting. I look at gallery art and wonder, *why am I drawn to this particular piece? What makes it appealing to me?* I look at the various elements of the painting that my trained artistic brain knows to consider— composition, values, light, edges, texture, colors. When painting daily, I consider which of these things to focus on today with this scene. It is helpful practice for my larger more thought-through paintings.



**Kathy Clericuzio's**  
colored pencil drawing,  
"January Jay",  
won First Place in the  
Drawing/Pastels category at  
the 4<sup>th</sup> of July Art Exhibit. In  
addition, it was awarded the  
"Popular Vote"

**Nan Quintin** will have a solo  
exhibit of her paintings at  
the Lawrence Library in  
Pepperell MA (15 Main St),  
Oct. 12 – Nov. 2, 2019.  
An Opening Reception will  
be held on Sat. Oct. 12,  
11:00 – 1:00.



"1894 Barn"



### ***Why challenge yourself?* by Trina Teele**

*(cont'd from previous page)*

#### See the Challenge Paintings

If you would like to view these paintings, they are on display at my studio at the CCA and are available at affordable prices. You can also follow my painting posts on [Instagram](#) or [Facebook](#).

#### Exhibit at the Groton Inn, Groton MA

Currently, I have quite a few of my larger paintings on display at [the newly renovated Groton Inn](#). Feel free to stop by and check out my and the other eleven artists' work which changes periodically. There will be an artist reception, Sunday, August 18, 2-5 pm so please consider joining us then!

#### Art Classes Offered

Also – consider taking a class with me. I offer [two types of classes](#). *Joy of Paint!* at the CCA is for all levels and is just a carefree and fun night of playing with paint where you will go home with a 16x20" painting by you. *Get Yourself Painting* is a 4-session class that works a bit like a group "private lesson" for people who are ready for more with their art. You will set aside time to paint your own ideas with your own supplies and I will be available for any guidance you need. Check out the CCA's webpage [www.Chelmsfordarts.org](http://www.Chelmsfordarts.org) for coming classes or follow *Joy of Paint!* on [Facebook](#).

## Member News (cont'd)



"Purple in the Meadow"

This soft pastel painting by **Wendy Prest** is currently in Wendy's solo exhibit in Jaffrey NH

**Wendy Prest** currently has a solo exhibit of her beautiful pastels, "Seen in New England," at the Jaffrey Civic Center in Jaffrey NH (40 Main Street). An Opening Reception was held on Saturday, August 10. The exhibit will be on display until September 6, 2019. There are 40 paintings that include landscapes, flowers, and pictures of a variety of things found in New England.

### The Summer Place

20 Summer Street, Chelmsford

**Terry Cryan, Diane Harvey, Helen Moriarty, and Marie Stabile** are the "Monday Morning Painters", and they currently have a display of their artwork at The Summer Place in Chelmsford, which is always free to visit and open to the public daily.



**Tom Christiano** created five wonderful videos, each set to music, of the CAS 4th of July Art Festival. Click on these links to check them out!

<https://www.youtube.com/watch?v=cqBd5pFRGno&t=3s>  
<https://www.youtube.com/watch?v=fqLmWI3x760&t=13s>  
<https://www.youtube.com/watch?v=qKYyU8iMQMc>  
<https://www.youtube.com/watch?v=qMSV4k9uORw&t=36s>  
<https://www.youtube.com/watch?v=EU3q9RmfEfE>

Tom is the Producer, Director and Host of the CHELMSFORD NEWS Cable TV Show.

[https://www.youtube.com/user/tom19482001/videos?view\\_as=subscriber](https://www.youtube.com/user/tom19482001/videos?view_as=subscriber)

## Exhibiting Opportunities

### **ALL Arts Gallery**

307 Market Street  
Lowell, MA 01852

Member Artists may lease space in the Cooperative Gallery and enjoy the advantages of being able to offer their work for sale year-round for a commission of only 25 percent. If you're interested in joining ALL, contact Co-op Chairperson, Margarida Correia at [www.artsleagueoflowellcoop@gmail.com](mailto:www.artsleagueoflowellcoop@gmail.com)

In addition, the Arts League of Lowell is offering the Greenwald Gallery for use for one-person or small group shows for selected periods during 2020. If you are interested in renting the gallery for a show of your own work, or to organize a show of a small group of artists, please download a guidelines document for available time slots and to find out more about a gallery rental opportunity.

[Click here to download guidelines](#) - .pdf

## Artist Studio Space Available

### **The Brush Art Gallery & Studios**

256 Market St, Lowell, MA 01852

The Studio Artists at the Brush are a group of like-minded peers who provide each other with opportunities for artistic growth.

Located in the Lowell National Historical Park and the Canalway Cultural District of Lowell, the Brush's working studios are open to the public 5 to 6 days a week and artists and visitors are encouraged to interact. This is a great way to build your following.

More info at this link: <http://thebrush.org/policy.htm>  
Contact Jim Dymont with questions. 978-459-7819

## Opportunities for CAS Members to Exhibit Their Artwork!

Avail yourself of these great opportunities!

You will need to have approximately 10-15 display-ready pieces of artwork. Group exhibits encouraged.

Contact **Roberta Witts**,  
CAS Exhibits Chairperson

### **Picture Yourself!**

17 Central Square,  
Chelmsford

Seeking artists! Have your artwork featured at the Picture Yourself! Frame Shop & Gallery in Chelmsford.

### **The Summer Place**

20 Summer Street,  
Chelmsford

Seeking artists to display their artwork at The Summer Place, which is always free to visit and open to the public daily.



---

*"Never lose the first impression  
which has moved you."*

*- John Baptiste-Camille Corot*

---



Photo and Poetry  
by **Sue Trepaney**

### **My Summer Garden**

*My perennial garden  
blooms*

*vigorously with vibrant  
colors--*

*Except for my coveted  
David Austin*

*A rose that did not meet  
my expectations.*

*Except that this flower  
reaches for the sun*

*And perfumes the air with  
such sweetness*

*That I have enjoyed this  
much-desired hybrid!*

## **A Word About CAS Monthly Meetings**

### **Refreshments at our Monthly Meetings, or not...**

Due to a lack of volunteers who wish to be responsible for refreshments at our meetings, the CAS Board has decided to use more of a "potluck" approach, in other words we will eat and drink whatever people bring, and if no one brings anything then we will not have refreshments.

If anyone would like to volunteer, we would love to have a Hospitality Chairperson; usually, helpers are not hard to come by.

Note to all: There are some paper goods in the closet; and usually some water bottles. Per the Board of Health, food handlers are required to wear plastic gloves, and a table cloth or plastic cloth must be used.

Expenses for refreshments will be reimbursed.

### **Respect Requested**

Please respect the person giving the demonstration. They have gone to a lot of effort to give a good demonstration; talking during the demonstration is extremely rude to the speaker and to those in the audience who wish to hear the speaker. If it continues as it was last season, we may ask those talking to leave the room. If you cannot hear the speaker, please move closer.



### **Chez Claire Art School**

provides painting instruction from

**Claire Gagnon** for all skill levels at a variety of locations.

For detailed information and to view Fall Schedule, go to <https://www.ChezClaireArtSchool.com>

or contact Claire

617-901-3873; or

617-901-3873 cell; or at

[claire@chezclaireartschool.com](mailto:claire@chezclaireartschool.com)

## “Happenings” – Demos on Cable TV

**“Happenings with Helen Moriarty”** To watch art demonstrations that are presented at our meetings and other programs, tune in to the Cable channels at the times listed below. You may also watch on your computer at any time. Just follow the starred directions below. Hope you enjoy the shows!

*Helen Moriarty, Chelmsford TV Producer*

September, 2019 - **“Pastel Painting with Robin Thornhill”**

Chelmsford Cable TV - Channel 8, Verizon - Channel 38

Monday 9:30 AM; Thursday 7:30 PM; Saturday 8:30 PM

Billerica Cable TV - Channel 8

Monday 4:30 AM; 4:00 PM; Friday 1:00 PM

\* To View Online: Some of the most recent "Happenings" may also be viewed on the website [www.chelmsfordtv.org](http://www.chelmsfordtv.org) On the Home page, click on Watch - On Demand - Search - type in "Happenings" and Artist's Name – Hit Enter. You should get the Streaming show.

## Volunteer Opportunities

**Volunteers are much appreciated and always needed!** Please consider volunteering. There are many tasks involved in keeping the CAS an active and engaged community. *We love our volunteers!*

Some Volunteer Opportunities include:

At our Meetings – setup, greeter, sign-in/ fee handler, raffle ticket sales, as well as procurement of raffle items, demonstrator's assistant, hospitality, and more!

At our Exhibits – setup, intake/registration, labelling, hanging, judge assistance, sales, hospitality and more!

Other – Field Trip Coordinator, Volunteers Coordinator.

Contact **Sue Trepaney** to volunteer.

---

“Throw your heart into the picture and then jump in after it.”

- Howard Pyle

---

### Plein Air Opportunity

Painting/ Drawing/  
Photographing

Chelmsford Farmers Markets

will be held on Saturdays from June 15 - Sept14, from 10:00 to 2:00. The organizers have invited CAS members to participate who wish to paint or draw en plein air.

### Fitchburg Art Museum

185 Elm St., Fitchburg MA

On the first Thursday of every month, the Fitchburg Art Museum has **free admission** from 3 to 7 p.m.

<https://fitchburgartmuseum.org/free-first-thursdays/>

### Free Fun Fridays Summer 2019

100 museums, theaters, and landmarks across the state offer **free admission** during the summer. Click here for full schedule:

<https://www.bostonmagazine.com/arts-entertainment/2019/06/14/free-fun-fridays-2019-schedule/>

## Next Newsletter: November 15, 2019

**Please share your Art News**  
with our members!

Also, let us know if you know of any Calls for Artists, upcoming art events/ exhibits or artist opportunities in our area.

The next newsletter will be published on November 15, 2019; deadline is November 11, 2019. Send your news and .jpgs to [nan@nanquintin.com](mailto:nan@nanquintin.com)

### Chelmsford Center for the Arts

(1A North Rd, Chelmsford)  
The Chelmsford Center for the Arts is where the Chelmsford Art Society holds its meetings and the 4th of July Festival. They need your support!  
Please check the CCA web site often for upcoming events and concerts:  
[www.chelmsfordarts.org](http://www.chelmsfordarts.org)

### CAS Cancellation Policy

When Chelmsford Schools are closed due to weather and there is a scheduled meeting for the CAS, the meeting will be canceled or postponed to another date.

---

*"Art is the concrete  
representation of our most  
subtle feelings."*

*- Agnes Martin*

---

## Calls for Artists

**ALL Arts Gallery** 307 Market St., Lowell  
Exposed 2019: "Black & White"  
Open juried exhibit, Sept 12 – Oct. 18  
Deadline: Online Entry Aug 9 - Sept 3  
<http://www.artsleagueoflowell.com/>

### Bedford MA Arts and Crafts Society

Annual Regional Art Show in conjunction with the town's Bedford Day activities.  
Sat., September 21  
Details: <http://www.bacsmma.org/bedford-day/>

### Beaver Brook Annual Fall Festival & Nature Art Show

117 Ridge Rd., Hollis NH  
"Scene Outside" Nature-themed artwork  
September 28 & 29 Deadline/Delivery: Sept. 23  
Details: <https://www.beaverbrook.org/events/fall-festival-and-nature-art-show/>

### Concord Center for the Visual Arts

**20th Annual Frances N. Roddy Open Competition**  
37 Lexington Rd, Concord  
Sept. 12 – Oct. 18  
Deadline/Delivery – Sept. 4 & 5, 2019  
Details: [https://www.concordart.org/wp-content/uploads/2018/12/roddy\\_20th\\_prospectus\\_rev.pdf](https://www.concordart.org/wp-content/uploads/2018/12/roddy_20th_prospectus_rev.pdf)

### ART Walk 2019 - Lexington, MA

5th Annual Art Walk, October 8 –18  
Deadline: Monday Sept. 16  
<https://sites.google.com/view/artwalk2019>  
Up to three 2D or 3D works, not restricted to Lexington residents. For more info: [lexartwalk@gmail.com](mailto:lexartwalk@gmail.com)  
Christina at Munroe Center for the Arts , 781-862-6040

### Learning Opportunity

#### Wild Salamander Creative Arts Center

30 Ash Street, Hollis NH (603-465-9453)

Art Classes for adults and children

Fall session starts Sept. 17

Exhibit Opportunities & Artisan Shop

<https://www.wildsalamander.com/>

## September and October Programs

**Please note that the following programs will be held at the Chelmsford Center for the Arts, 1A North Rd, Chelmsford, MA. The meetings are at 7:00 PM. All meetings are open to the public; Free to members, and \$5.00 for non-members.**

### September Demonstration

#### Tracey Spadafora - Encaustics

Wed. Sept. 25, 2019 at 7 PM

Tracey is a professional artist with 25 years of experience in encaustic. She has worked as a paint maker, and then as a workshop instructor for the past 22 years, including at the International Encaustic Conference.

The artist holds a BFA from Boston University, with a Major in Painting, and Minor in Art History. In addition, she majored in Painting and earned an MFA at the State University of NY.

For the past 15 years, Tracey's current bodies of work are DNA series. She uses DNA sequences as a base to provide visual patterning and symbolic references. Her "Evolve" series suggests relationships between humanity and the environment being continually in flux.

The artist has been interviewed in various media, including "The Artist Magazine", May 2014, August 2018; and "Boston Voyager Magazine", August 2018.

Tracy Spadafora maintains a Studio in Westborough, MA.

### October Demonstration

#### Dave Drinon – Oil Painting

Wed. Oct. 30, 2019 at 7 PM

Dave has been a New Englander for his entire life. He enjoys painting New England seascapes and urban scenes. During the years when he was pursuing his career as a financial advisor, he always continued to be active in the arts.

In 2008, Dave enrolled in the NH Institute of Art in Manchester, NH. For four years he attended art classes nights and Saturdays. In 2012, he changed his life forever by becoming a full time artist. He has since become an Artist in Residence at the Whistler House in Lowell, and began to win honors and sell his work.

A few famous painters who have influenced the artist are John Singer Sargent, Edward Seago, Winslow Homer, Lucian Freud, JMW Turner, and Aldro Hibbard. Dave paints in a representational and expressionist style, either in his studio, or "en plein air" on the streets of Lowell, or at the ocean.

Dave Drinon maintains a studio at Western Avenue Studios, Lowell.



"Tangle" Encaustic Painting  
by **Tracey Spadafora**



"Newport Breaker"  
Oil Painting by **Dave Drinon**



"Fall"  
Oil Painting by **Dave Drinon**



## Chelmsford Art Society Programs 2019 - 2020

| Date & Time  | Demonstration / Event  | Location                                     |
|--|--|--|
| Sept. 25, 2019<br>Wed. 7 PM  | <b>Tracey Spadafora</b><br>Encaustics  | Chelmsford Center for the Arts, 1A North Rd. |
| Oct. 30, 2019<br>Wed. 7 PM   | <b>Dave Drinon</b><br>Oil Painting   | Chelmsford Center for the Arts, 1A North Rd. |
| Nov. 20, 2019<br>Wed. 7 PM   | <b>Nita Casey</b><br>Pastels   | Chelmsford Center for the Arts, 1A North Rd. |
| Dec. 2, 2019<br>Mon. 5 - 7 PM<br><i>Snow Date: Dec.9,<br/>Mon. 5 - 7 PM</i>              | <b>Holiday<br/>Member Show<br/>Receiving</b>   | *Chelmsford Library,<br>25 Boston Rd         |
| Jan. 11, 2020<br>Sat. 2 - 4 PM   | <b>Holiday<br/>Member Show<br/>Reception</b>   | *Chelmsford Library,<br>25 Boston Rd         |
| Sat. Jan. 25, 2020<br><u>after</u> 4:00 PM<br>or<br>Mon. Jan. 27, 2020<br>9:00 - 5:00 PM | <b>Holiday<br/>Member Show</b><br>Pick up & Sign out<br>Artwork at Library Desk      | *Chelmsford Library,<br>25 Boston Rd         |
| Jan. 25, 2020<br>**Sat. 2 PM   | <b>Mary Woodward</b><br>Lecture:<br><i>Illustrated Talk:</i><br>"The Impressionists" | *Chelmsford Library,<br>25 Boston Road       |
| Feb. 29, 2020<br>**Sat. 2 PM   | <b>Don Ouellette</b><br>Watercolors  | Chelmsford Center for the Arts, 1A North Rd. |
| March 25, 2020<br>Wed. 7 PM  | <b>Tom Gill</b><br>Acrylics  | Chelmsford Center for the Arts, 1A North Rd. |
| April 29, 2020<br>Wed. 7 PM  | (To be announced)  | Chelmsford Center for the Arts, 1A North Rd. |
| May 27, 2020<br>Wed. 7 PM  | <b>Mini Painting<br/>Workshop</b>  | Chelmsford Center for the Arts, 1A North Rd. |

Meetings are held at the Chelmsford Center for the Arts, 1A North Rd., Chelmsford, MA (unless otherwise noted\*). All programs are at 7:00 PM (unless otherwise noted\*\*); no cost to members, \$5.00/non-members.

## CAS Board of Directors

|                            |  |
|----------------------------|--|
| <b>Co- President:</b>      | Barbara Ludinsky <a href="mailto:bludinsky@verizon.net">bludinsky@verizon.net</a><br>978-256-0647  |
| <b>Co-President:</b>       | Elaine Seidel <a href="mailto:ElaineMSeidel@gmail.com">ElaineMSeidel@gmail.com</a><br>978-866-5471 |
| <b>Treasurer:</b>          | Barbara Ludinsky <a href="mailto:bludinsky@verizon.net">bludinsky@verizon.net</a><br>978-256-0647  |
| <b>Secretary:</b>          | Sue Trepaney <a href="mailto:strepaney@gmail.com">strepaney@gmail.com</a><br>978-667-4374          |
| <b>Member at Large:</b>    | Roberta Witts <a href="mailto:bobbi.witts@gmail.com">bobbi.witts@gmail.com</a><br>978-256-0140     |
| <b>Exhibits:</b>           | Roberta Witts <a href="mailto:bobbi.witts@gmail.com">bobbi.witts@gmail.com</a><br>978-256-0140     |
| <b>Programs/Publicity:</b> | Helen Moriarty <a href="mailto:hsmori146@aol.com">hsmori146@aol.com</a><br>978-251-3971            |
| <b>Special Projects:</b>   | Julie Montague <a href="mailto:jhmontague@gmail.com">jhmontague@gmail.com</a><br>617-686-1013      |
| <b>Membership:</b>         | Elaine Seidel <a href="mailto:ElaineMSeidel@gmail.com">ElaineMSeidel@gmail.com</a><br>978-866-5471 |
| <b>Newsletter:</b>         | Nan Quintin <a href="mailto:nan@nanquintin.com">nan@nanquintin.com</a><br>978-433-9731             |

## About the Chelmsford Art Society

All residents of Chelmsford, Massachusetts and its surrounding communities who have an interest in the arts and crafts are invited to become members of the Chelmsford Art Society.

Membership is open to any person who produces art or craftwork or has an active interest in the arts and crafts.

CAS meetings are usually held on the last Wednesday of the month at the Chelmsford Center for the Arts, September through May. See Schedule of Programs for more details.

The CAS sponsors the 4th of July Art Show at the CCA which is a highlight of the Town of Chelmsford's 4<sup>th</sup> of July Celebrations.

The Chelmsford Art Society has many volunteer opportunities and depends entirely on the continued enthusiasm and involvement of its members.

## Chelmsford Art Society Membership

Memberships are valid through March 31st; dues are due on or before April 1st of each year. Please renew early, your timely renewal makes life easier for the organizers and is much appreciated!

### Membership Benefits include:

- Being part of a supportive group of artists and art lovers;
- Notice of meetings, special events and online quarterly newsletters;
- Discounted entry fee in annual July 4<sup>th</sup> Exhibit;
- Free admission to demos and lectures (\$5.00 for non-members\*);
- Members-only exhibit (at no cost!) at the Chelmsford Library in December;
- Featured Artist exhibits in local venues;
- Supporting the arts community, including the annual CAS scholarship;
- Membership fee is tax deductible; and
- Discounts at Picture Yourself! Frame Shop and Gallery in Chelmsford.

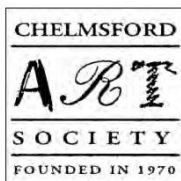
### Membership fees are as follows:

Single \$25      Family \$40      Senior Citizen \$20 (60 and over)      Student \$20 (up to grade 12)

Renew or join online [www.chelmsfordartsociety.com](http://www.chelmsfordartsociety.com), or mail the form below and a check to CAS, PO Box 401, Chelmsford, MA 01824; or drop off the form and check at Picture Yourself! Frame Shop and Gallery, 17 Central Square, Chelmsford, MA.

**Questions or comments?** Contact us at: [chelmsfordartsociety@gmail.com](mailto:chelmsfordartsociety@gmail.com)

*\*Note: Starting in September 2019, non-members will be charged a \$5.00 fee for attending the monthly demos and lectures. In addition, members who have not renewed will have their email addresses removed from the CAS email list.*



Application for membership to the

## Chelmsford Art Society

Please print clearly

Date \_\_\_\_\_

### New Membership

Name \_\_\_\_\_

Address \_\_\_\_\_

City \_\_\_\_\_ State \_\_\_\_\_ Zip \_\_\_\_\_

Phone \_\_\_\_\_

E-Mail \_\_\_\_\_

Website \_\_\_\_\_

Preferred media/style of interest: \_\_\_\_\_

☐ Please add my email and URL to the CAS website

☐ Please save paper and email me my newsletter!

### Renewal of Membership

Name \_\_\_\_\_

*Please update any personal information using the New Membership section.*

### Fees:

Make checks payable to Chelmsford Art Society

☐ Single \$25                      ☐ Family \$40

☐ Senior (60+) \$20              ☐ Student \$20

☐ Donation to the scholarship fund. \$ \_\_\_\_\_

**Fees are due every April 1.**

**Bring application and fee to our monthly CAS meeting**

(check dates for meetings on website or newsletter)

**Or mail to:**

**Chelmsford Art Society**  
PO Box 401  
Chelmsford, MA 01824

For more information, visit our website at  
<http://www.chelmsfordartsociety.org/>

**Chelmsford Art Society**

PO Box 401

Chelmsford, MA 01824

[www.chelmsfordartsociety.com](http://www.chelmsfordartsociety.com)

