



Winter 2019

An Important Word...

Inside This Issue

- 1 An Important Word
- 2 Nov & Jan Demo Reviews
- 3-6 Member News
- 7 Mexican Folk Art Exhibit
- 8 Happenings & Opportunities
- 9-10 CAS News
- 11 Feb. - May CAS Programs
- 12 2017-2018 Programs List
- 13 Calls for Artist
- 14 Board of Directors
- 15 Membership Form

Three easy ways to renew your CAS membership!

1. You may renew online:
<http://www.chelmsfordartsociety.com>

2. You may mail the attached form with your check to:

Chelmsford Art Society
PO Box 401
Chelmsford, MA 01824

3. You may deliver the form and check by hand to:

Picture Yourself!
Frame Shop and Gallery
17 Central Square
Chelmsford, MA

Membership Notice!

Memberships are valid through March 31st; dues are due on or before April 1st of each year. Please renew early, your timely renewal makes life easier for the organizers and is much appreciated!

See sidebar for three easy ways to renew.

Membership Benefits include:

- Being part of a supportive group of artists and art lovers;
- Notice of special events and online quarterly newsletters;
- Discounted entry fee in annual July 4th Exhibit;
- Members-only exhibit (at no cost!) at the Chelmsford Library in December;
- Featured Artist exhibits in local venues;
- Supporting the arts community, including the annual CAS scholarship;
- Membership fee is tax deductible; and
- Discounts at Picture Yourself! Frame Shop and Gallery in Chelmsford.

Membership fees are as follows:

Single \$25
Family \$40
Senior Citizen \$20 (60 and over)
Student \$20 (up to grade 12)

Questions or comments?

Contact us at:
chelmsfordartsociety@gmail.com

We are grateful for the continued involvement of our members in the society.

November & January Presentations

November Demo - Debra Bretton Robinson, Acrylics

Debra presented a demonstration of her unique style of artwork at the CAS monthly meeting in November. Her paintings have a contemporary look to them, in large part due to her bold use of vibrant color and confident brushwork. The combination of representational and abstract features make her paintings fun to look at. She mentioned that her love of music contributes to her enjoyment of painting as well as the delightful results.

She notes influences of Fauvism, a style of painting that uses vivid expressionistic and non-naturalistic color; Matisse was the artist most associated with this style.

Debra's paintings have won many awards. She is a long-time member of the CAS, and currently has a studio at 122 Western Ave Studios (#212) in Lowell, MA.



Debra Bretton Robinson gave a demonstration of her unique way of painting with acrylics

January Presentation - Mary Woodward, "The Bauhaus School of Art - 100 years: Modern Designs for a Modern World"

Mary Woodward spoke at the Chelmsford Library in January about the Gropius House in Lincoln MA, where she is the lead guide.

Mary presented numerous examples of Bauhaus creations ("modern design") ranging from apartment buildings to paintings and furniture. The Bauhaus design inventively combines the fine arts with arts and crafts, and continues to influence modern art.

Walter Gropius was one of the most influential architects of the twentieth century. He designed the Gropius House as his family home when he came to teach architecture at Harvard's School of Design in 1938. He lived in his house in Lincoln, MA for 30 years, to the end of his life. The Gropius House is a National Historic Landmark.

Walter Gropius founded the influential German design school known as the Bauhaus in 1919. A 100th anniversary celebration is planned in May.

For more information: Call 781-259-8098, or visit website:
<https://www.historicnewengland.org/property/gropius-house/>

See page 8 for how to view demos on Cable TV or internet (Happenings with Helen Moriarty).



Mary Woodward gave a presentation about the Gropius House in Lincoln, MA

It has bothered me all my life that I do not paint like everybody else.

- Henri Matisse

Member News

Changes in CAS Board of Directors

We are sad to lose our recent efficient and enthusiastic Treasurer, **Jerry LaGrange**, as he and his wife Donna have moved to Connecticut to start a new chapter in their lives. Jerry's cheerful contributions were acknowledged when he was presented with an award at the Members Exhibit Reception at the Chelmsford Library, one of the CAS' "Best Treasurers Evah".

Please welcome two wonderful additions to the CAS Board of Directors:



Our out-going Treasurer, **Jerry LaGrange**, was presented with an appreciation award by **Roberta Witts** at the Members Exhibit Reception at the Chelmsford Library on January 12, 2019.



Barbara Ludinsky – our new Treasurer! Thank you for stepping forward to take on this responsibility!

Elaine Seidel – our new Membership Chairman! Thank you for stepping forward to take on this responsibility!



Wisdom, Deep Profile
oil painting by **Trina Teele**

Gallery by NOA at the Groton Inn, Groton MA includes artwork by **Trina Teele**. The art exhibit is currently on display in the first floor corridor, and is open to the public and free to visit.

Member News (cont'd)

In the Gallery at
Greater Lowell Community Foundation



“Faces & Places” Donna Berger Solo Exhibit

The “Faces & Places” exhibit runs from January 22 until April 19, 2019, Mon – Fri, 9-5:00 pm.

Greater Lowell Community Foundation
100 Merrimack St, Suite 202, Lowell, MA
www.glcfoundation.org/



Lee Fortier in front of his photograph
“Pastel Mountain View with Chairs”

Chelmsford WinterFest

The Annual Photography Exhibit sponsored by the Chelmsford Cultural Council was held recently at the Chelmsford Library.

At the Awards Reception on Sun., Feb. 3, 2019, **Lee Fortier** won third place, for his photograph “Pastel Mountain View with Chairs”, and Honorable Mention for “Portrait of a Rabbit”.

*“Tell your own story and then you will
be interesting.”*
– Louise Bourgeois

The annual **Members Exhibit at the Whistler House Museum in Lowell** has been extended to the end of February. The Whistler House is open Wed-Sat, 11:00-4:00 pm.



This oil painting by **Peggy Jungbluth** is currently on exhibit at the Whistler House Museum.

Don Ouellette gave a watercolor painting demonstration on two Saturdays in December at the Floral Arts Gallery in Westford.



Additionally, throughout the month of December he had a solo exhibit of his beautiful landscape paintings at The Floral Arts Gallery.



If you missed seeing his exhibit, there is currently a display of his artwork in the lower hallway at the Emerson Hospital in Concord, MA.



Member News (cont'd)

CAS Members Winter Exhibit at the Chelmsford Library

On Sat., Jan 12, 2019, a well-attended Artists Reception was held at the Chelmsford Library for artists participating in the annual Members Winter Exhibit. Live music was provided by long-time CAS member, **Don Ouellette**, who is a talented artist who paints watercolors and oil paintings and also happens to play the guitar and sing exceptionally well!!! A great show – thanks to everyone who participated!

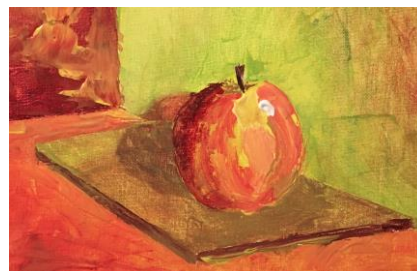


Member News (cont'd)

New Winter Art Program for Adult and Children Art Classes at Chez Claire Art School



Drawing, Acrylic Painting, and Watercolor classes started on February 4, but it's not too late to register. You can join after the start, as long as the class is not full. Drop-ins are welcome. All classes take place in **Claire Gagnon**'s home studio in Dracut, MA. Class size limited to allow for personalized instruction.



Painting by **Claire Gagnon**,
Art Teacher at
Chez Claire Art School

| Adult Classes | | | |
|--|-----------------|---------------|---|
| Drawing | Feb 4 to Mar 25 | 7-9 PM | \$240 - 2 spots available |
| Acrylic Painting for Beginners | Feb 5 to Mar 26 | 1-3 PM | \$240 - 2 spots available |
| Acrylic Painting for Beginner and Intermediate | Feb 5 to Mar 26 | 7-9 PM | \$240 - 2 spots available |
| Watercolor | Feb 7 to Mar 28 | 1-3 PM | \$210 - 2 spots available |
| Drawing | Feb 7 to Mar 28 | 7-9 PM | \$210 - 3 spots available |
| Children Classes (10-14) | | | |
| Drawing for Children | Feb 9 to Mar 30 | 8:30-9:30 AM | \$165 (all supplies provided) - Class is full |
| Watercolor for Children | Feb 9 to Mar 30 | 9:45-10:45 AM | \$165 (all supplies provided) - 4 spots available |

For more information or to register, contact Claire Gagnon at claire@chezclaireartschool.com or 617-901-3873 (cell), or go to website: <https://chezclaireartschool.com/page/18068/2019-winter-art-program>

Don't Despair! Paint with Claire!

To enjoy an online article written by Margaret Smith for Wicked Local about the **Annual Chelmsford Art Society Members Exhibit** at the Chelmsford Library, follow this link: <http://chelmsford.wickedlocal.com/news/20190103/chelmsford-library-hosts-art-show>

To enjoy an online article about artist **Dave Drinon** in The Eagle Tribune, follow this link: https://eagletribune-cnhi.newsmemory.com/publink.php?shareid=07913d4d1&fbclid=IwAR0QMxxaAW2hR0ZPEzUA7PMrw7SoxgHd1A3o5rzzWE_LGuunxsfYGw6i_EUE



Alebrijes are a form of Mexican folk art depicting fantastical animal-like creatures.



Armando Jiménez Aragón



Alejandro Jiménez Aragón

Mexican Folk Art Exhibit

Article submitted by John Tyler, Foreign Language Teacher at the Groton Dunstable Middle School.

Tues., March 5, 2019, 4:00 – 6:00 P.M.

Westford Council on Aging

20 Pleasant Street, Westford, MA 01886

Refreshments will be provided

Alebrijes are brightly colored Mexican folk art wood sculptures, carved by hand and depicting fantastical animal-like creatures.

Two visiting artists from Oaxaca, Mexico are coming to the Groton and Westford area during the first week of March. During the day they will be demonstrating their art for students in the schools. One of their scheduled events will take place on Tuesday, March 5 from 4:00 to 6:00 PM at the Westford Council on Aging, 20 Pleasant Street, in Westford.

Armando, the celebrated Zapotec wood carver from Oaxaca, exhibits and demonstrates the art he learned at the side of his famous grandfather, Manuel Jiménez, the pioneer of Oaxacan woodcarving as seen in the recent Disney feature *Coco*. His work illustrates a popular children's book, *ABeCedarios: Mexican Folk Art ABC* in English and Spanish, and is widely exhibited in galleries and museums throughout the United States.

Join Armando and his son Alejandro to learn more about the history of these mystical creatures and to explore books featuring Jiménez family artwork.

Please RSVP to: 978-692-5523 by March 1st. If you have any questions, or would like to know more about the program or where their other engagements are, please feel free to contact John Tyler:

Email: jtyler@gdrsd.org

John Tyler, Ed.D., M.Ed. 978-272-1070

Foreign Language Teacher

Groton Dunstable Middle School

344 Main Street

Groton, MA 01450

"Happenings" – Demos on Cable TV

"Happenings with Helen Moriarty" To watch art demonstrations that are presented at our meetings and other programs, tune in to the Cable channels at the times listed below. You may also watch on your computer at any time. Just follow the starred directions below. Hope you enjoy the shows!

Helen Moriarty, Chelmsford TV Producer

January 2019 - Thomas R. Dunlay "Boston School Painting"

February 2019 - Debra Bretton Robinson - "Acrylic Painting"

Chelmsford Cable TV - Channel 8, Verizon - Channel 38

Monday 9:30 AM; Thursday 7:30 PM; Saturday 8:30 PM

Billerica Cable TV - Channel 8

Monday 4:30 AM; 4:00 PM; Friday 1:00 PM

* To View Online: Some of the most recent "Happenings" may also be viewed on the website www.chelmsfordtv.org On the Home page, click on Watch - On Demand - Search - type in "Happenings" and Artist's Name - Hit Enter. You should get the Streaming show.

Opportunities

Volunteers are needed - You are needed! Please volunteer!

There are many tasks involved in keeping the CAS an active and engaged community.

Some Volunteer Opportunities include:

At our Meetings – setup, greeter, raffle ticket sales (and procurement of raffle items), demonstrator's assistant, food service

At our Exhibits – setup, intake/registration, labelling, hanging, judge assistance, sales and more!

Other – Volunteers Coordinator, Webmaster

Many opportunities exist! Contact Roberta Witts or Sue Trepaney, or email chelmsfordartsociety@gmail.com

Current Need: President of the CAS

Current Need: Vice President of the CAS

Current Need: Webmaster

The CAS is looking for a dedicated webmaster to keep our web site updated <http://www.chelmsfordartsociety.com/> If interested, or if you know of someone who might be, contact Roberta Witts.

Scholarship Information

The Chelmsford Art Society offers a scholarship annually to local teens continuing their Art studies in college.

Applications will be available in March; and interviews with students will be scheduled in April.

The Chelmsford Library – a Word of Appreciation!

Thanks go to the Chelmsford Library staff for all the opportunities provided in support of the local Artist Community and the Chelmsford Art Society.

Literature, Music and Art are vital necessities for a full and enriched life!

Thank you! Hannaford Supermarket



Hannaford Supermarket
66 Drum Hill Rd., Chelmsford
is donating \$1.00 to the
Chelmsford Art Society for every
Reusable Community Tote Bag
that is bought in their store during
the month of March!

CAS News

Chelmsford Center for the Arts

1A North Road, Chelmsford MA

This is where we hold most of our monthly meetings. The CCA hosts many programs. Please support this amazing place!

Open Studios are every "Second Saturday" from 1:00-4:00 pm. Stop in and visit the workspaces of resident artists Donna Berger, Trina Teele, and Rita Thompson.

Check the CCA web site for news and events:

<http://www.chelmsfordarts.org>

Western Avenue Studios

122 Western Avenue, Lowell
Visit artists in their workspaces during Open Studios - "First Saturday" of every month.

Loading Dock Gallery

The Loading Dock Gallery is open Wednesday through Saturday, 12 noon to 5:30 pm, Thursday evenings until 8:30 pm and Sunday 12 noon to 4 pm. For more information, call 978-656-1687 or visit www.theloadingdockgallery.com

Hospitality at CAS Meetings

At the Artists Reception at the Chelmsford Library, **Barbara Ludinsky** coordinated the refreshments for the CAS along with what the library supplied. In addition, she organized refreshments for Mary Woodward's Bauhaus lecture the following Saturday, Jan. 19, also at the library. **Thank you, Barbara!**

Volunteers are needed to provide refreshments at the following meetings:

Feb. 23, March 27, and April 24.

Please volunteer, either one or two people per meeting. You only need to bring something simple (just fig newtons and juice, for example – your choice!). Bottled water and paper supplies are available at the CCA. Keep your receipts for expenses, and they will be reimbursed.

To volunteer, please send an email to:

chelmsfordartsociety@gmail.com

CAS Cancellation Policy

When Chelmsford Schools are closed due to weather and there is a scheduled meeting for the CAS, the meeting will be canceled or postponed to another date.

CAS News (cont'd)

Simpsons Poster Fundraiser

Lance Wilder, who is formerly from Chelmsford and now works in Hollywood for "The Simpsons" TV show, has once again generously donated a multiple-signatures signed Simpsons Poster to the CAS to assist in our fundraising efforts. **Thank You Lance!**

Tickets will be available for purchase at demos and meetings, or may be purchased at Picture Yourself! Frame Shop and Gallery. The poster will reside at Picture Yourself! for viewing.

Tickets are \$5.00 each, or 6 tickets for \$20.00.
Drawing will be held on July 4th.



**"The Simpsons" Signed Poster
Treehouse of Horror XXV
Episode 557**

Don't Miss These Opportunities to Exhibit YOUR Artwork!

To arrange an exhibit at either of these venues, contact:
Roberta Witts: bobbi.witts@gmail.com 978-256-0140

The Gallery at Summer Place

20 Summer Street, Chelmsford

The Summer Place is always free to visit and open to the public daily.

Picture Yourself! Frame Shop and Gallery

17 Central Square, Chelmsford

Some recent sales at the Picture Yourself! Gallery

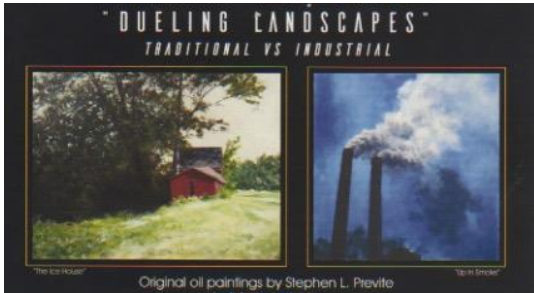
by CAS members Nan Quintin, Marie Stabile, Lisa Regopoulos, and Priscilla Levesque:



February & March CAS Programs

Please note that the following programs will be held at the Chelmsford Center for the Arts, 1A North Rd, Chelmsford, MA.

See page 12 for a complete listing of CAS programs.



Dueling Landscapes
Oil Paintings by
Steve Previte

February Demo - Steve Previte, Oil Painting Sat., Feb. 23, 2019 at 2:00 at the CCA

Steve Previte was born in E. Boston, MA and now lives in Hollis, NH. He has an engineering degree in Mechanical Design Technology and worked in a high tech industry until 1986; he left the corporate life to pursue a career in fine art.

His style is Representational Impressionism. In his paintings, Previte focuses mainly on the light and atmosphere on New England woodland and architectural scenes. Recently, he has been working on painting urban/industrial sites - a real departure from his famous New England woodland scenes.

Steve has won many awards and has had many exhibits. He has a working studio in Hollis, NH and teaches in his studio in Nashua, NH.



Winds of Change
Encaustic with Pastels by
Robin Thornhill

March Demo – Robin Thornhill, Encaustic with Pastels Wed., March 27, 2019 at 7:00 at the CCA

Born and raised in MA, Robin Thornhill is inspired by this area, New England marshes and beaches in particular. The artist is primarily self-taught. Over the years, she has studied life drawing, design, advanced drawing, and painting with oils, pastels and encaustics.

Encaustics is also known as hot wax painting. It involves heated beeswax to which colored pigments such as pastels or oils are added. Encaustics were originally used in Egypt to paint the faces of the dead on the mummies. This method has preserved these portraits for thousands of years.

Thornhill is a Signature Member of the Pastel Society of America, a juried member of Oil Painters of America and The National Association of Women Artists, a member of the Newburyport Art Association and the Experimental Art Group of Rockport. She is also a core member of the Band of Brushes, an en plein air group based in Newburyport, MA.

April Demo/ Meeting will be held on Wed. April 24, 7:00 at the CCA. Demonstrator TBD.

May Meeting - join us for a mini painting workshop and pizza party on Wed. May 29 (5:00-8:00) – bring your own supplies! The artist who donates the most paintings to the CAS to be sold at the July 4th Exhibit will receive \$25.00.

Chelmsford Art Society Programs 2018 - 2019

| Date & Time | Demonstration / Event | Location |
|---|---|---|
| Sept. 26, 2018 Wed. 7 PM | Byron Carr Watercolor Demonstration | Chelmsford Center for the Arts, 1A North Rd. |
| Oct. 30, 2018 Tues. 7 PM | Helen Moriarty Scratchboard | Chelmsford Center for the Arts, 1A North Rd. |
| Nov. 28, 2018 Wed. 7 PM | Debra Bretton-Robinson Acrylic Painting | Chelmsford Center for the Arts, 1A North Rd. |
| Dec. 3, 2018 Mon. 5 - 7 PM <i>Snow Date: Dec.5, Wed. 7 - 9 PM</i> | Holiday Member Show Receiving | *Chelmsford Library, 25 Boston Rd |
| Jan. 12, 2019 Sat. 2 - 4 PM | Holiday Member Show Reception | *Chelmsford Library, 25 Boston Rd |
| Sat. Jan. 19, 2019 4:00 PM (after lecture) or Tues. Jan. 22, 2019 9:00 - 5:00 PM | Holiday Member Show Pick up & Sign out Artwork at Library Desk | *Chelmsford Library, 25 Boston Rd |
| Jan. 19, 2019 **Sat. 2 PM | Mary Woodward Lecture: "Bauhaus School of Art" | *Chelmsford Library, 25 Boston Road |
| Feb. 23, 2019 **Sat. 2 PM | Steve Previte Oil Painting | Chelmsford Center for the Arts, 1A North Rd. |
| March 27, 2019 Wed. 7 PM | Robin Thornhill Encaustic with Pastels | Chelmsford Center for the Arts, 1A North Rd. |
| April 24, 2019 Wed. 7 PM | (To be announced) | Chelmsford Center for the Arts, 1A North Rd. |
| May 29, 2019 Wed. 7 PM | Mini Painting Workshop | Chelmsford Center for the Arts, 1A North Rd. |

Meetings are held at the Chelmsford Center for the Arts, 1A North Rd., Chelmsford, MA (unless otherwise noted*). Most programs are at 7:00 PM (unless otherwise noted**) and are free and open to the public.

Calls for Artists

Westford Regional Art Event

Parish Center for the Arts, 10 Lincoln St., Westford

March 29 – April 7, 2019

Online registration only: March 1-23

Deliver artwork March 24 & 25.

For more info: <https://westford.org/pca/art-gallery/wrae2019/>

Parish Center for the Arts Gallery

10 Lincoln St., Westford

Call for Art for 2019-2020 Season

The PCA Gallery invites artists to submit work for consideration in month-long solo and group exhibitions. Submit 8-10 images on CD or via email (.jpg files). Include the title, dimensions and media for each image, plus a brief artist biography and contact information.

The artist will be responsible for setting up the exhibit, and for gallery sitting. Deadline for submission is Mon., April 1, 2019. Email:

pca@westford.org Visit their web site for more information:

www.westford.org/pca

Audubon – Photography Exhibit

Deadline: April 8, 2019

<https://www.audubon.org/photoawards-entry>

Picture Yourself! Frame Shop and Gallery

17 Central Square, Chelmsford

If you would like to have your artwork featured at the Picture Yourself! Frame Shop in Chelmsford, contact Roberta Witts.

The Summer Place

20 Summer Street, Chelmsford

Contact Roberta Witts if you would like to have an exhibit of your artwork at The Summer Place.

Chelmsford Library

25 Central Square, Chelmsford

Meeting Room, and a display case, are available.

If you, either alone or with a couple of your fellow artists, would like to exhibit at the Chelmsford Library, Contact Jeff Hartman. 978-

256-5521 x109; jhartman@chelmsfordlibrary.org

Next Newsletter: May 15, 2019

Please share your Art news with our members! Also, let us know if you know of any Calls for Artists, upcoming art events/ exhibits or artist opportunities in our area. The next newsletter will be published on May 15, 2019; deadline is May 9, 2019. Email news items and .jpgs to nan@nanquintin.com

CAS Board of Directors

| | |
|----------------------------|--|
| President: | Vacant |
| Vice President: | Vacant |
| Treasurer: | Barbara Ludinsky bludinsky@verizon.net 978-256-0647 |
| Secretary: | Sue Trepaney strepaney@gmail.com 978-667-4374 |
| Member at Large: | Roberta Witts bobbi.witts@gmail.com 978-256-0140 |
| Exhibits: | Roberta Witts bobbi.witts@gmail.com 978-256-0140 |
| Programs/Publicity: | Helen Moriarty hsmori146@aol.com 978-251-3971 |
| Webmaster: | Vacant |
| Assets: | Sandra Galloway mschief93@aol.com 978-251-7254 |
| Membership: | Elaine Seidel ElaineMSeidel@gmail.com 978-866-5471 |
| Newsletter: | Nan Quintin nan@nanquintin.com 978-433-9731 |

About the Chelmsford Art Society

All residents of Chelmsford, Massachusetts and its surrounding communities who have an interest in the arts and crafts are invited to become members of the Chelmsford Art Society.

The CAS meetings are held on the last Wednesday of the month (unless otherwise noted) at the Chelmsford Center for the Arts or at the Chelmsford Library, September through May.

The CAS sponsors the 4th of July Art Show at the CCA which has become an annual tradition and is a highlight of the Town of Chelmsford's 4th of July Celebrations.

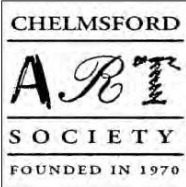
The Chelmsford Art Society has many volunteer opportunities and depends entirely on the continued enthusiasm and involvement of its members.

Membership Renewals Are Due!

New! Membership Cards

Each renewing or new member will be presented a membership card that will include the membership expiration date (March 31st and the year of expiration). Show your card to get a discount at Roberta Witt's Picture Yourself! Frame Shop and Gallery in Chelmsford.

Every time you renew your membership, check that all your information is updated!

| | |
|---|---|
|  | <p>Application for membership to the</p> <h1>Chelmsford Art Society</h1> |
| | <p><i>Please print clearly</i> Date _____</p> |
| New Membership | Fees: |
| Name _____ Address _____ City _____ State _____ Zip _____ Phone _____ E-Mail _____ Website _____ Preferred media/style of interest: _____ | Make checks payable to Chelmsford Art Society <input type="checkbox"/> Single \$25 <input type="checkbox"/> Family \$40 <input type="checkbox"/> Senior (60+) \$20 <input type="checkbox"/> Student \$20 <input type="checkbox"/> Donation to the scholarship fund. \$ _____ |
| <input type="checkbox"/> Please add my email and URL to the CAS website <input type="checkbox"/> Please save paper and email me my newsletter! | Fees are due every April 1. Bring application and fee to our monthly CAS meeting (check dates for meetings on website or newsletter) Or mail to: Chelmsford Art Society PO Box 401 Chelmsford, MA 01824 |
| Renewal of Membership | For more information, visit our website at http://www.chelmsfordartsociety.org/ |
| Name _____ <i>Please update any personal information using the New Membership section.</i> | |

Chelmsford Art Society

PO Box 401

Chelmsford, MA 01824

www.chelmsfordartsociety.com

