

## November Demonstration



"Newberry Street in the Fall" –  
Watercolor by Nita Casey

The Chelmsford Art Society is featuring Nita Casey who will demonstrate Pastel Painting and Making a Blog. The artist, born and raised in France, now lives in Pepperell, MA where she operates "The Gingerbread Gallery", 28 Main St. A very motivated person, she considers herself very fortunate to live in a beautiful New England town. "The beauty is all around me, from mountains to the seashore and a little bit of Old World feeling" She gets her ideas while driving the back roads where she discovers countless scenes that intrigue her.

Nita attended the famed Ecole des Beaux Arts at a young age and went on to the Ecole de Dessin in Paris. She is a former president of the Chelmsford Art Society, and has won many prizes and has had many solo art shows.

The Chelmsford Art Society will meet for the demonstration on Tuesday, November 30, 2010, at 7:00 PM at Chelmsford Center for the Arts, 1 North Rd., Chelmsford, MA.

## Nita Casey Continued...

Presently Nita has a Blog on the internet where she sketches or paints a picture most every day. Nita will tell us how she reaches many more people and also makes more sales using her Blog:  
[gingerbreadartstudio.blogspot.com](http://gingerbreadartstudio.blogspot.com)



"Rocking Chair with Red Geraniums" by  
Nita Casey.

## A Word from the President

This is to keep the members up to date on the status of the Chelmsford Center for the Arts at Town Hall. The Old Town Hall is going to be renovated using a historical buildings' grant. After Feb 15, 2011, the building will be closed for at least 1 year. The Art Society will have their monthly meetings in the **Town Offices** on the last Tuesday of the month as usual while the work goes on.

Still in question is where we will put our equipment, and where we will have the 4th of July Art Festival. Things are being worked out, and we are looking forward to being in a beautifully updated building when we can get back into the Chelmsford Center for the Arts at Town Hall.

**Helen Moriarty**, President

## CAS Programs 2010 – 2011

**November 30, 2010, (Tues.)**

Nita Casey - Pastel, Making a Blog

**Dec. 1, 2010, (Wed.)**

**Dec. 2, 2010 (Snow date)**

Holiday Member Show hanging  
6 -7 pm Chelmsford Library

**Dec. 11, 2010, Sat.**

Reception at Library 2 - 4 PM

**Jan. 20, 21, 22, 2011**

Pick up and Sign out at Library Desk

**Jan 25, 2011, Tues.**

Dianne Levine -Critique

**Feb. 26, 2011, Sat.**

Rita Thompson - Exploring Acrylic  
Summer Place

**March 29, 2011, Tues.**

Monique Skellarios, Oil  
Town Office, Rm LL03 Recycle Office

**April 26, 2011, Tues.**

To Be Determined

**May 31, 2011, Tues.**

Mini Painting Workshop  
Town Office, Rm LL03 Recycle Office

These programs are free of charge. Unless otherwise noted, meetings will be held at the Old Town Hall, 1 North Road, Chelmsford, MA. at 7:00 PM.

## October Demonstration

Phil Bean did a wonderful job demonstrating his style of palette knife painting. He painted a beautiful fall scene and we had a big turnout for his demo. If you missed this demo, be sure not to miss next months!



## 2010-2011 CAS Board Members

**President: Helen Moriarty**

978-251-3971

[hsmori146@aol.com](mailto:hsmori146@aol.com)

**Vice President: Claire Gagnon**

978-957-5058

[creativartist@aol.com](mailto:creativartist@aol.com)

**Treasurer: Gopika Narula**

978-809-9465

[gopika.narula@gmail.com](mailto:gopika.narula@gmail.com)

**Assets: Sandra Galloway**

978-251-7254

[mschief93@aol.com](mailto:mschief93@aol.com)

**Exhibits: Rita Thompson**

978-256-5975

[rthompson@wright-loeb.com](mailto:rthompson@wright-loeb.com)

**Hospitality: TBD**

**Membership: Tracy Newman**

978-250-6764

[etoonin@comcast.net](mailto:etoonin@comcast.net)

**Newsletter: Esther Donlon**

978-692-0140

[art\\_by\\_esther@comcast.net](mailto:art_by_esther@comcast.net)

**Programs/Publicity: Pat Burns**

978-649-4243

[Pat.burns44@gmail.com](mailto:Pat.burns44@gmail.com)

**Special Publicity: Bob Stegmaier**

978-251-2524 (cell 917-297-0008)

[imagekeepers@juno.com](mailto:imagekeepers@juno.com)

**Secretary: TBD**

**Scholarship:**

**Jen Heater**

978-256-3807

[rippart@aol.com](mailto:rippart@aol.com)

**Deb Bretton Robinson**

978-251-0388

[brettonarts@hotmail.com](mailto:brettonarts@hotmail.com)

**Webmaster: Eileen Byrne**

978-454-1892

[webmaster@chelmsfordartsociety.com](mailto:webmaster@chelmsfordartsociety.com)

## Openings for Board of Directors

We have an opening for Secretary and Hospitality. The Hospitality position is open in Jan 2011.

Secretary duties include:

Attend monthly Board meetings.

Take minutes at meetings.

Notify/send reminders of board meetings to Board members.

Hospitality Duties include:

Bring refreshments to the monthly member meetings.

If interested - Call Helen Moriarty, phone # 978 251 3971 or e-mail [hsmori146@aol.com](mailto:hsmori146@aol.com)

## HAPPENINGS

by Helen Moriarty

**Chelmsford** - "Tales of Art Restoration by Peter Kostoulakos" will air on Comcast Channel 8, and Verizon, Channel 38, Thursdays at 7:00 PM and Saturdays at 8 PM, throughout the month of Nov, 2010. Kostoulakos tells stories about his adventures in art restoration.

On the **Message Board of Comcast Channel 8, and Verizon Channel 38 Chelmsford Cable TV**, can be seen a Mini Art Show of art work by Nita Casey who will demonstrate Pastel Painting and Making a Blog at the Chelmsford Center for the Arts on Nov 30, 2010 at 7 PM.

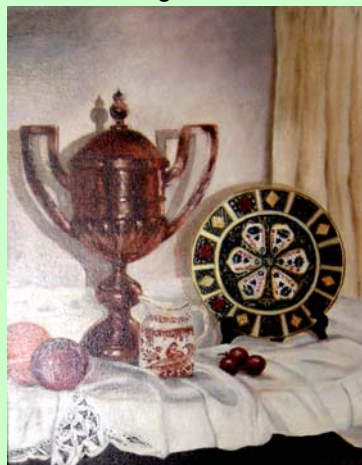
**Lowell** Cable TV will be showing "Tales of Art Restoration by Peter Kostoulakos" for the month of **Nov**, 2010 on **Monday at 10 AM Chan. 8** and Tuesday at 6:30 PM Channel 95.

**Billerica** Cable TV Channel 8 also features " Tales of Art Restoration by Peter Kostoulakos", on **Monday at 4:00 PM and Friday at 1:00 PM** for the month of Nov 2010.

## IN THE GALLERY

The Summer Place  
20 Summer Street, Chelmsford:

Oil paintings by Pauline Arms  
November through December



Everyone is invited to Pauline's Reception; Sat., Nov. 6th 2-4pm.

The Town Offices  
50 Billerica Road, Chelmsford:

Nov/Dec – Elaine Carbonneau  
Consider showing your work! Please contact Rita Thompson at 978-256-5975 or [rthompson@wright-loeb.com](mailto:rthompson@wright-loeb.com)

## Member's News

**Bob Stegmaier's** had a photographic triptych - "*The Lovers - Pensive Passionate Pleased*" juried into an exhibit at the Cambridge Art Association.

The artwork was judged by Arthur Dion of Gallery Naga.

The opening of the Cambridge Art Association annual members show was held on Sat October 16<sup>th</sup>.

**Esther Donlon** recently finished creating a blog of her artwork. This blog shows how her artwork has evolved over the past 40 years. Please take a look at:

[Artbyesther.blogspot.com](http://Artbyesther.blogspot.com)

## Farmers' Market Art Show.



Rita Thompson enjoying the Plein Air painting

The Chelmsford Art Society presents members' plein air art work produced at the Chelmsford Farmers' Market this summer.

The work will be shown at the **Chelmsford Center for the Arts Gallery**, 1A North Rd., Chelmsford, MA from **Nov. 1 - Nov. 30**.

**Reception Sunday, Nov 7, 2 - 4 PM.**

Refreshments and door prize. Everyone welcome. Free to all.

## Norman Rockwell's Stockbridge Christmas

The Chelmsford Community Education is sponsoring a trip to Stockbridge to see the Norman Rockwell scenes and go to his museum on Sunday December 5, 2010. If you are interested in taking the trip for \$119. pp, for fliers/forms call 978 251 5151 or see the website:

[www.chelmsfordcommunityeducation.org](http://www.chelmsfordcommunityeducation.org)



### December Library Show

Get your art work ready for the December Library show. We will be accepting 2 pieces of art work on:

- Wed. Dec. 1 or
- Thurs. Dec. 2 Snow date

This year we will have a Popular Vote competition during the reception.

Winners will receive:

- 1st place: a ribbon and \$50.
- 2nd place: a ribbon and \$25.
- Honorable Mention: a ribbon and \$15.

If you would like to get in on the fun to put up the show or work at the reception

call Helen Moriarty 978 251 3971 or  
Rita Thompson 978 256 5975

### Chelmsford Cultural Council

Opening Reception:

Monday, Nov. 8, 2010, 6-8 p.m., at the Chelmsford Public Library  
McCarthy Meeting Room  
25 Boston Road, Chelmsford, MA

Please join the Chelmsford Cultural Council at this special reception to meet the author, Tom Ryan, and the artists who contributed to this book on the history of Chelmsford.

Copies of the book will be available.

Refreshments and music will also be provided.

### Appleton Mills Artists Apartments

When it is completed in the April of 2011, Appleton Mills will offer 130 affordably priced, modern loft-style rental apartments for artists of all media, including actors, writers and musicians. Monthly rents for tenants will range from approximately \$421 for a studio to \$954 for a two-bedroom townhouse. For more information:

[www.LiveAppletonMills.com](http://www.LiveAppletonMills.com).

Or contact:

#### Dan Drazen

Assistant Project Manager  
Office: 617.720.8400, ext. 24

### Brush Gallery Annual Members' Show

Dec. 11, 2010 to Jan. 29, 2011

**Deadline for entry: Nov. 9, 2010**

**AWARDS: Best in Show: \$200.00**

#### JUROR:

James Veatch, Chairman, Art Department, University of Massachusetts Lowell

#### EXHIBITION:

This juried members' exhibition will be a mix of paintings, collage, fiber, photography, drawings and sculpture. The opening reception will be held during our popular Holiday Marketplace Weekend.

#### ELIGIBILITY:

Open to all active members of the Brush Art Gallery -OR- the New England Sculptors Association (NESA)

#### SUBMISSION:

Application is done on-line. Work will be by juried from digital images on CD. Up to 3 pieces may be submitted. Where appropriate, 2 views of each piece may be provided. Application fee is only \$15.00, but membership in the Brush Gallery or New England Sculptors Association is required. You will be given an opportunity to apply for membership from either the Brush Gallery or the New England Sculptors Association. This is a good time to take out a membership as there will be no fewer than 4 juried exhibitions scheduled at the Brush over the next year, with deep discounts on application fees being offered to members.

**COMMISSION:** A 30% commission will be taken on all sales.

**FOR COMPLETE DETAILS AND ON-LINE APPLICATION, CLICK [HERE](#).**

**GALLERY:** The Brush Art Gallery is housed in a restored silk mill in the National Historical Park next to the Visitor Center. The complex, which was modeled on the Torpedo Factory in Alexandria, VA, houses a 2,000 square foot gallery for changing exhibitions by regional, national, and international artists, as well as studios for 15 resident artists and 22 associate artists. The gallery is handicapped-accessible.

### IMPORTANT DATES:

- **November 9:** Application, CD and payment due at Brush Gallery no later than 4:00 pm
- **November 16:** Notification of jury results
- **December 2, 3 and 4:** Delivery of work to Brush Gallery
- **December 11:** Artists' Reception and exhibition opens to the public
- **January 29, 2011:** Exhibition closes at 4:00
- **January 30 and Jan 31,** Artwork pickup (noon - 4 PM); Shipped artwork returned.

The Loading Dock Gallery at Western Avenue Studios presents:

*In an Instant* show **Wed Oct 27<sup>th</sup>** through **Nov 21<sup>st</sup>**.

Opening reception is **Friday Nov 5<sup>th</sup>**, 6-9 pm.

Show consists of photography by **Adrien Bisson** and Paintings by **Bill Tyers**.

### 9th Annual Art Show and Sale at the Methuen Library

Exhibit to be held at:

The Great Hall at Nevins Memorial Library  
305 Broadway,  
Methuen, MA 01844

Exhibit Opens:

Wednesday, October 27, 2010

Artist's Reception, Thursday, October 28, 6:30 to 8PM

Hours:

Monday thru Thursday 10 AM to 8PM

Friday and Saturday 10 AM to 4PM

Closed on Sunday

Hours are subject to change if no monitors are available.

